



- FLOORPLAN -

The Cambridge

4 BEDROOMS	2.5 BATHROOMS	2 CAR GARAGE	2,690 SQ.FT.
---------------	------------------	-----------------	-----------------

This inviting floor plan incorporates 4 bedrooms, 2.5 baths, and details that contribute to living large and happy. The added ingredient of large windows— from every side as well as above—creates sun-drenched spaces wherever you go.

Let's start with flexibility. The open concept of the main floor gives you limitless ways to design your interior. The Cambridge includes a flex room off the foyer, with an angled entry that offers more privacy from the comings and goings—perfect if you decide to use the room as a home office.

Across from the flex room is the formal dining room, a space that is experiencing more demand as families want more togetherness at mealtime. The formal dining room connects with the kitchen through a nook that can be converted to a butler's pantry. Add cabinets for storage and maybe a sink for stacking and clean-up when entertaining.

Step beyond the foyer's spaces and into the main living area. The great room lives up to its name, with great, big space and a fireplace that pulls it together. The 2- story great room adds a second level of height to the grandeur of the room.

On the opposite end of the main living area, which stretches the width of the home, the kitchen is a tempting combination of appetizing eye appeal and plentiful work and storage space, including a large, double-door pantry. You'll appreciate having an oversized center island for prep, serving, and clean-up. The breakfast bar comfortably seats 4 people when casual dining is more to your taste.

The Cambridge's 4 bedrooms are located on the second level. Each one is wrapped with solitude that comes from smartly designing the entries as far apart as possible from the neighboring bedroom—with the exception of the fourth bedroom next to the owner's suite. Like the rest of The Cambridge's design, the bedrooms are designed for growing with your family, from toddler to teen and beyond. So, we include a walk-in closet in every bedroom.

The owner's suite is a special treat and retreat. Escape to a large bedroom in the back corner of the second floor. There's plenty of room to create your haven here. Your bathroom's dual vanities and private water closet make the space easy to navigate and share. The large walk-in closet also gives you the space you need to keep a happy balance.

CONTACT US: (716) 202-0839

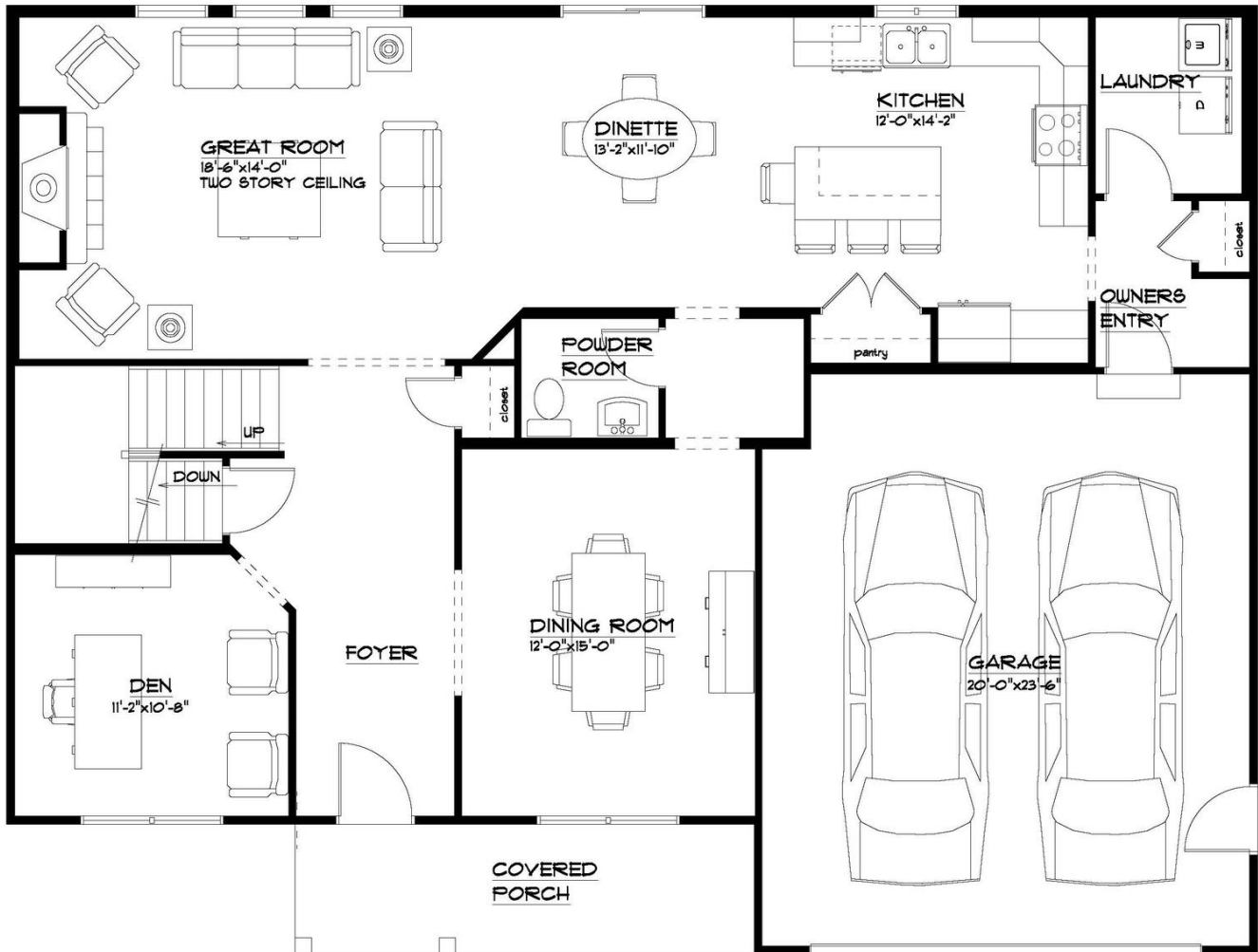
FORBESCAPRETTO.COM



ForbesCapretto Homes continuously improves home designs and reserves the right to modify home features and specifications without notice or obligation. Square footage and measurements are approximate. Renderings of elevations are artist's concepts. Floor plans vary per elevation. ForbesCapretto Homes standard features vary by home design and location, please refer to the included features sheet for the community to define specifications. This brochure is for illustrative purposes and not part of the legal contract. Please ask Sales Associate for complete details. © 2023 ForbesCapretto Homes.

- FIRST FLOOR -

The Cambridge



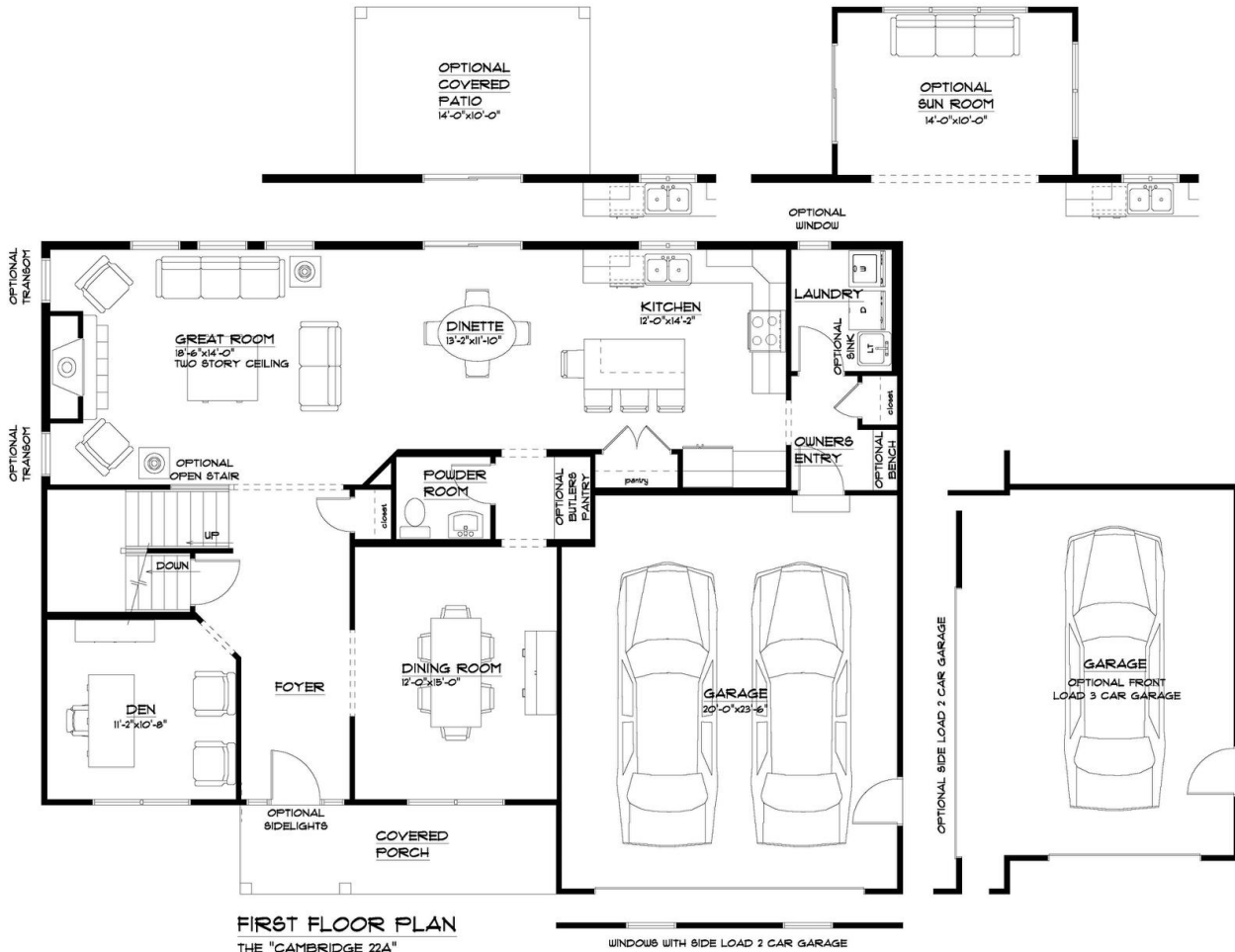
FIRST FLOOR PLAN

THE "CAMBRIDGE 22A"
 7/8/2022
 LIVING AREA: 1358 S.F.
 OVERALL DIMENSIONS:
 51'-4" x 39'-0"



- FIRST FLOOR OPTIONS -

The Cambridge



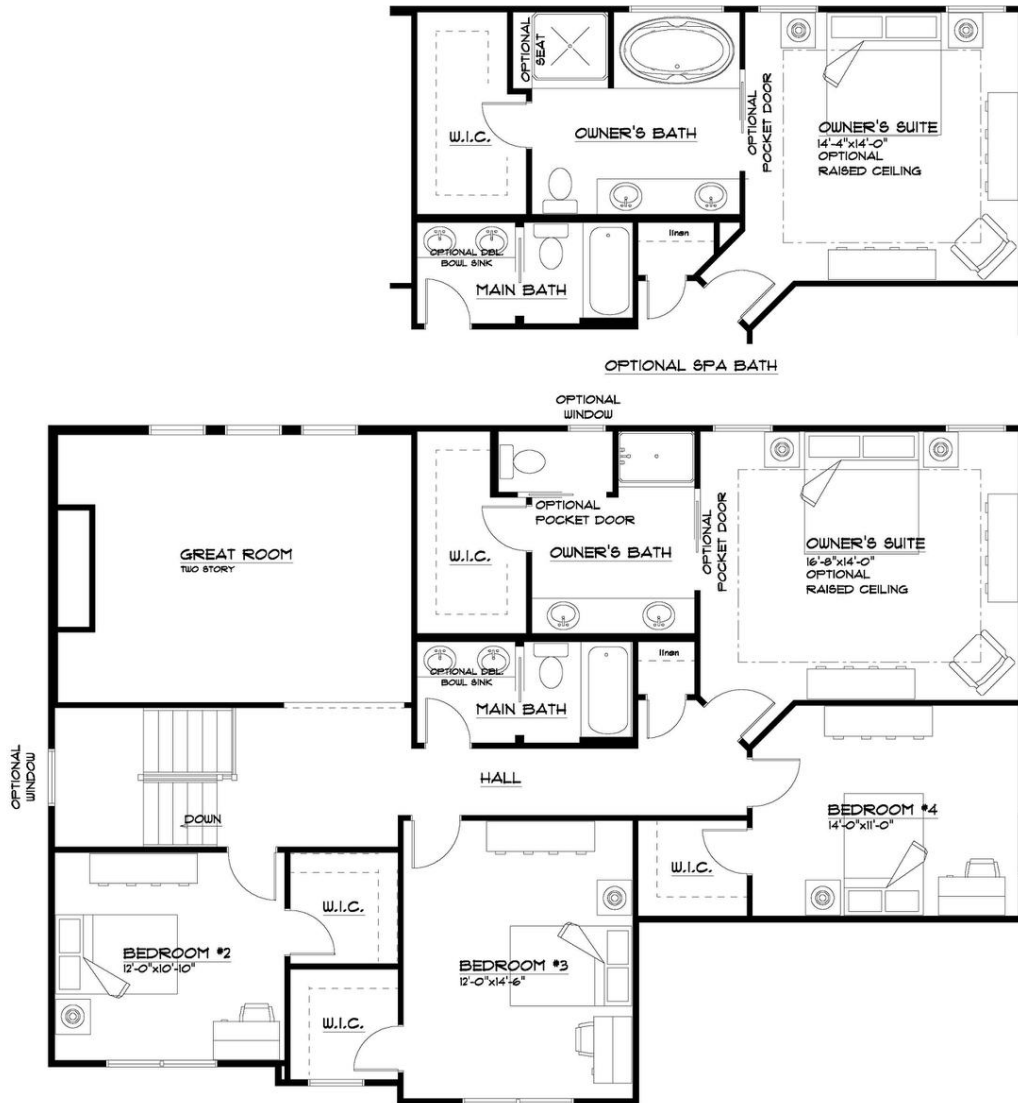
FIRST FLOOR PLAN

THE "CAMBRIDGE 22A"
 1/8/2022
 LIVING AREA: 1358 S.F.
 OVERALL DIMENSIONS:
 51'-4" x 39'-0"

WINDOWS WITH SIDE LOAD 2 CAR GARAGE



- SECOND FLOOR -
The Cambridge



SECOND FLOOR PLAN

THE "CAMBRIDGE 22A"
1/12/2022
LIVING AREA: 1332 S.F.
CLERESTORY 274 S.F.
TOTAL AREA 1606 S.F.



- SECOND FLOOR OPTIONS -

The Cambridge



SECOND FLOOR PLAN

THE "CAMBRIDGE 22A"
 7/12/2022
 LIVING AREA: 1332 S.F.
 CLERESTORY 274 S.F.
 TOTAL AREA 1606 S.F.

