


# The Lennox

Available in 5 Communities



## Call for Price

1 Elevations Available

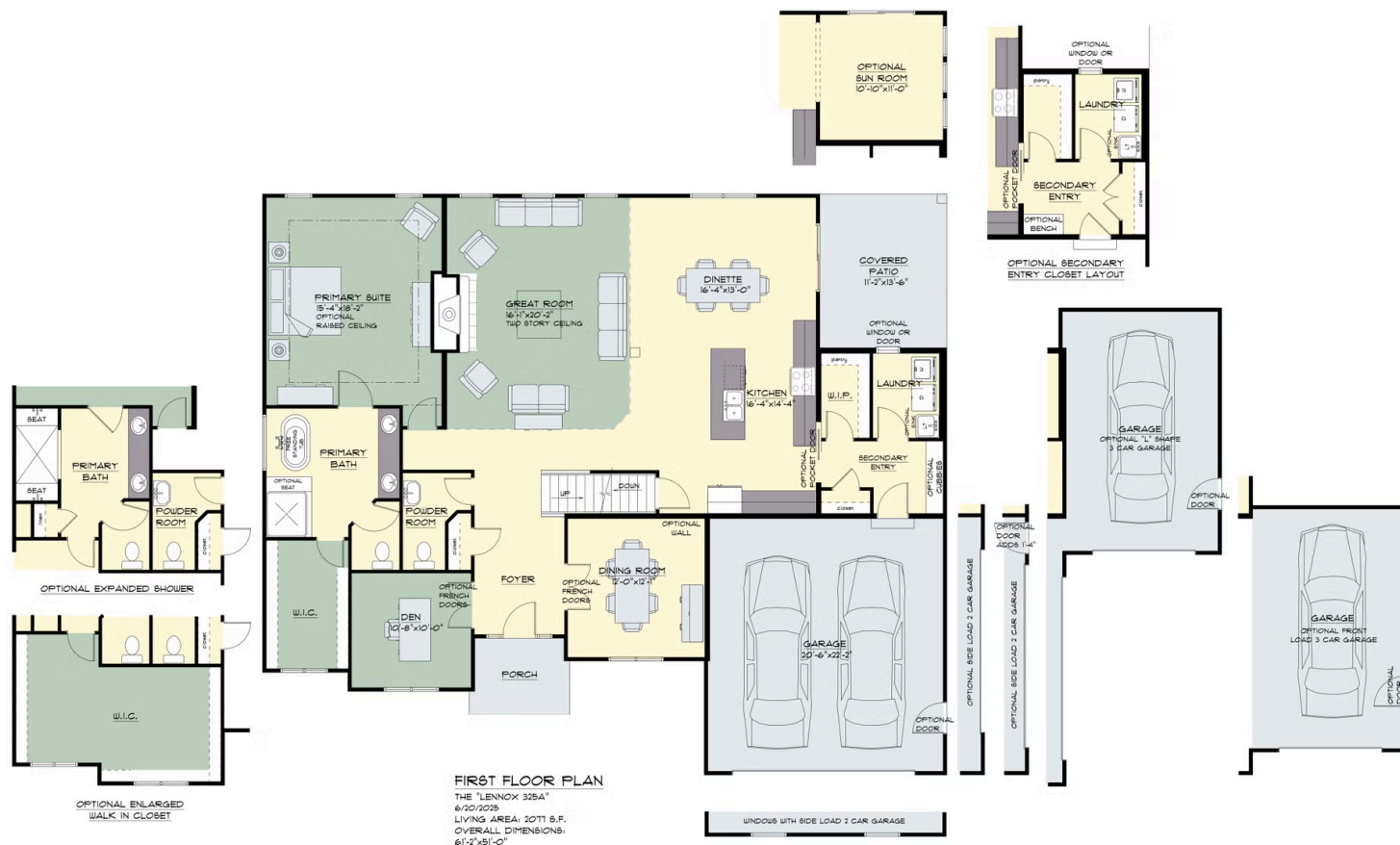
-  2,504+ Sq. Ft.
-  3 - 4 Bedrooms
-  2.5 Bathrooms
-  2 Car Garage

Your home says a lot about you. When you choose The Lennox, what does it reflect? Clearly, you respect the proven qualities of traditional architecture, but like to put your own twist on it. This home design presents a seamless blend of classic lines with nuances that give it distinction. Inside The Lennox, you'll experience countless days relaxing in a sun-bathed great room, cozying up to the fireplace on chilly days, and sharpening your culinary skills in the gourmet kitchen. You'll ask yourself why you waited so long to finally have such a large center island where you can seat your family or guests, serve up a big buffet, or just relax with a cup of coffee while admiring the view. This home also shows that you appreciate the convenience of a first-floor owner's suite—like a private retreat away from the other 2 bedrooms upstairs. The Lennox fits your lifestyle like a finely tailored suit, with extra space where you might need it—a formal dining room, den, loft, and a smartly designed family entry. When you want the balance of proven sensibility with exhilarating style, The Lennox is for you.

\* Photos may depict some features no longer available.

# The Lennox

Available in 5 Communities



All square footage is approximate. Renderings are artist's conceptions and may vary slightly from the actual home. Homes may be built in reverse of plans shown, depending on site conditions. Minor architectural changes may be made occasionally at the option of the builder. Please contact your Sales Consultant for details.



## FIRST FLOOR PLAN

THE "LENNOX 325A"

6/20/2025

LIVING AREA: 2071 S.F.

OVERALL DIMENSIONS:

61'-2" x 51'-0"



## SECOND FLOOR PLAN

THE "LENNOX 325A"

6/20/2025

LIVING AREA: 555 S.F.