


UNDER CONSTRUCTION



Home Priced At

**\$874,900**

Plan: The Crestwood

 2,982+ Sq. Ft.

 4 Bedrooms

 2.5 Bathrooms

**\*Photos are virtually staged representations of the home, not the actual property photos\***

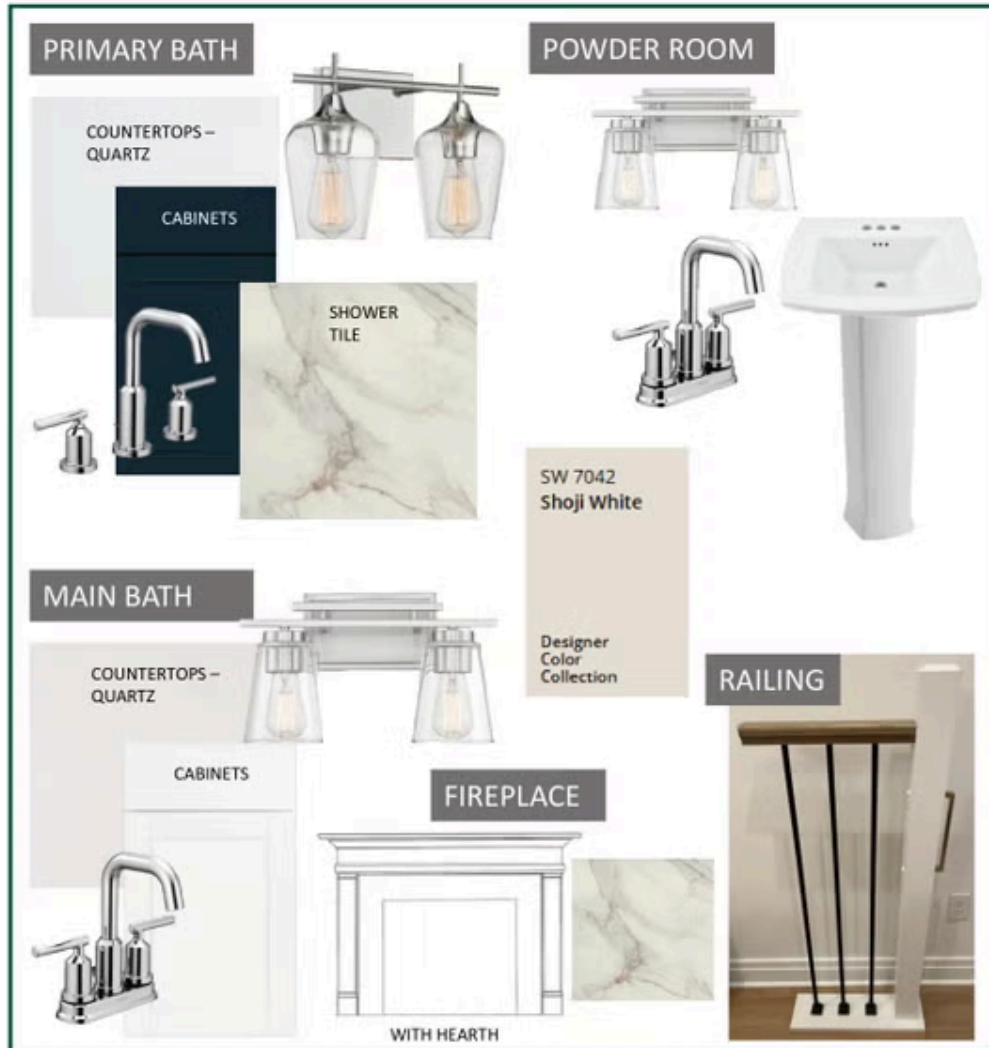
Progress continues inside **5676 Dorothy Circle**, and this **Crestwood Quick Delivery Home** in Clarence is beginning to show what makes this design special. Walls are being painted, flooring is going in, and cabinetry and trim work are being installed – all adding warmth, light, and definition to the home's interior spaces.

The Crestwood floorplan blends nearly **3,000 sq ft** of thoughtful living space with an open layout that brings the great room, kitchen, and dining room together in one seamless flow, perfect for everyday living and entertaining alike. A large formal dining room and a flex room off the foyer are starting to take shape, offering versatile space for a home office, hobby room, or play area.

Upstairs, the four bedrooms – including a spacious primary suite with a private bath retreat and walk-in closet – are beginning to come together, with bedrooms thoughtfully spaced for privacy. With each detail progressing, **5676 Dorothy Circle** is turning into a place full of promise, and the finish line is within sight.

## The Crestwood

5676 Dorothy Cr, Clarence NY 14032  
Homesite # 8



Disclaimer: Although every effort is made to show an accurate representation, actual products may have slight variation in color.

## The Crestwood

5676 Dorothy Cr, Clarence NY 14032  
Homesite # 8

### FLOORING



### KITCHEN / DINETTE

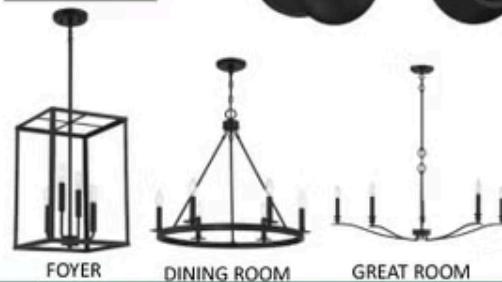


ROOF: ONYX BLACK (SHINGLES) & BLACK (METAL)  
SIDING: RIVIERA DUSK 4.5" & BOARD AND BATTEN  
TRIM: WHITE  
GARAGE DOOR: WHITE SHORT PANEL  
FRONT DOOR STYLE : 6 PANEL W/ 2 FULL GLASS SINGLE LITE SIDELIGHTS  
FRONT DOOR COLOR: EXTRA WHITE SW 7006  
WINDOW GRILLES FRONT ELEVATION ONLY 2 X 1 TOP AND BOTTOM SASH

### DOOR HARDWARE

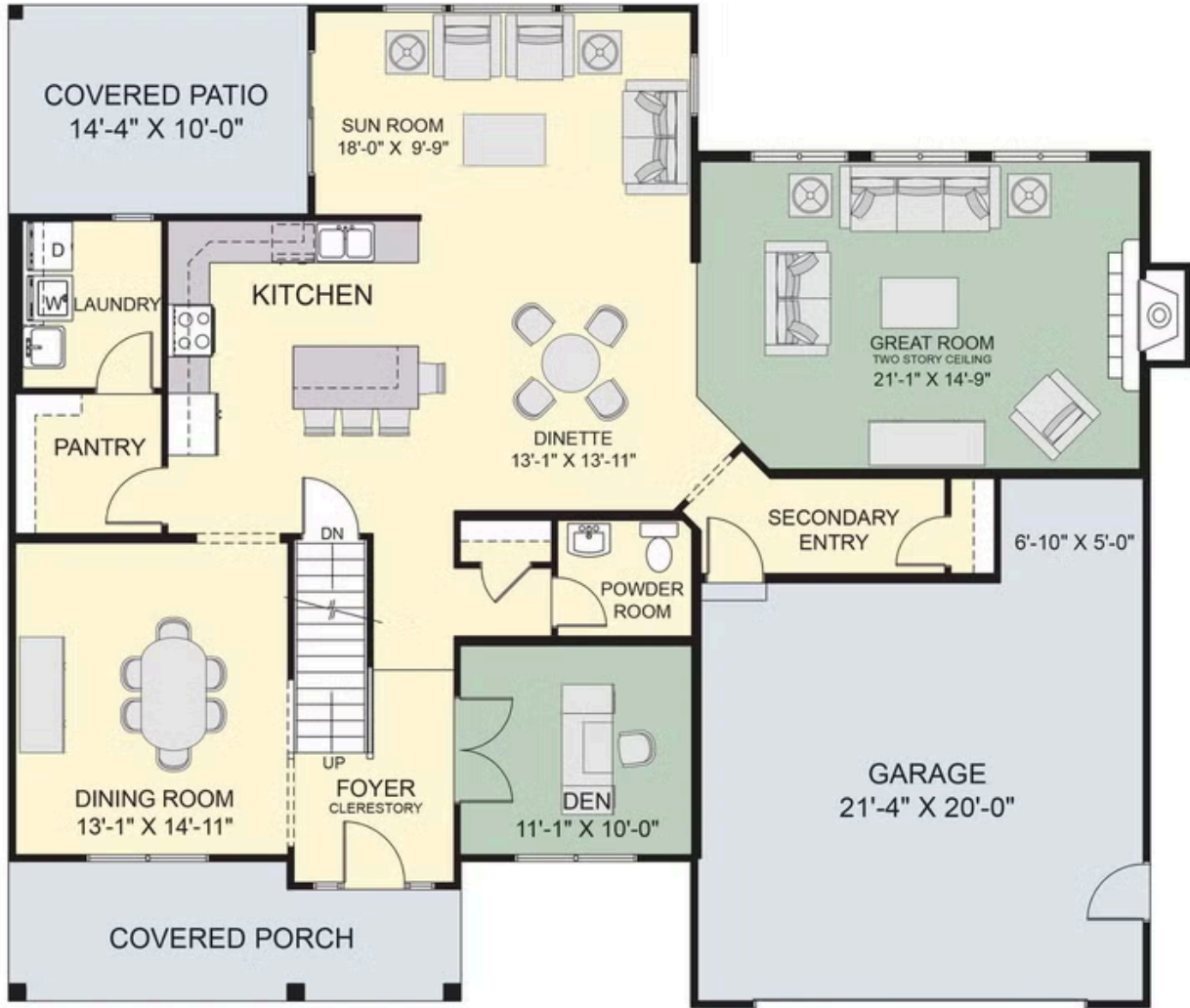


### LIGHTING



Disclaimer: Although every effort is made to show an accurate representation, actual products may have slight variation in color.

## First Floor



MAIN FLOOR

## Second Floor

