


SALE PENDING



SALE PENDING

Plan: The Crestwood

 **2,982+ Sq. Ft.**

 **4 Bedrooms**

 **2.5 Bathrooms**

Welcome to a community that gives you a new view of what “home” should mean.

Imagine a place where the peaceful drive home is a prelude to what lies ahead. Leading to a community where beautiful homes are surrounded by large yards. Where neighborhood pride is clearly demonstrated in the pristine surroundings—from the tree-lined streets and tranquil ponds to the landscaped yards. Cannon Woods presents this picturesque homecoming.

We're building the Crestwood, a versatile home design that starts with exquisite architecture.

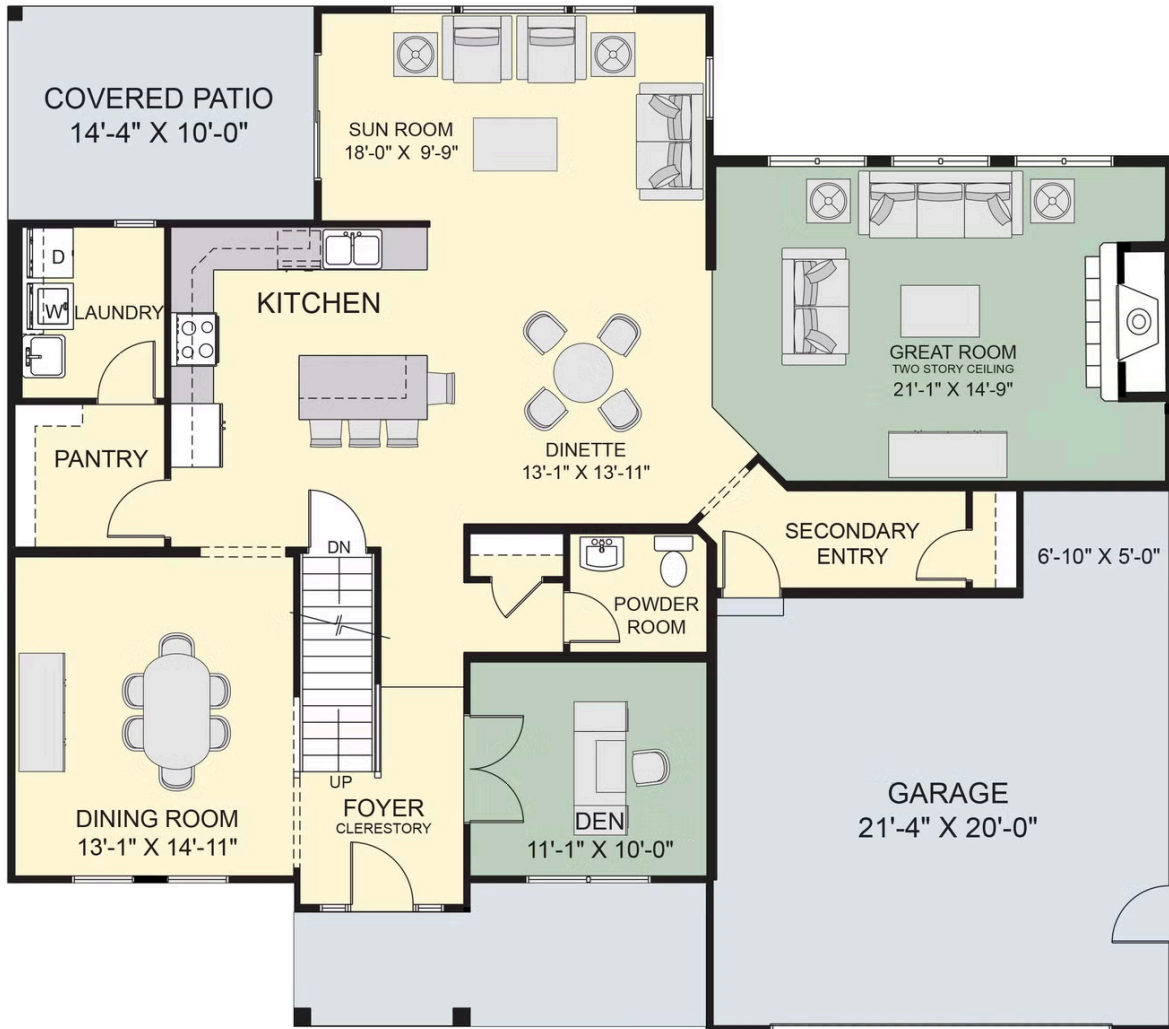
This 4-bedroom home blends nearly 3,000 square feet in 2 levels. The open concept on the main level gives you space to cook, dine, relax, play, and entertain—all at the same time, if you like. Large windows stream natural light into your home, filling it with the “sunshine vitamin”. Just beyond the open living area, a large formal dining room extends your entertaining possibilities.

On the second level, the 4 bedrooms have been situated so that the entrances are spread apart to offer more privacy, an essential feature that can be overlooked in some floor plans. Your primary suite, which includes a dressing area, expansive walk-in closet, and a private bath retreat. The 3 additional bedrooms are also accompanied by a full bath.

* Photos do not depict actual home

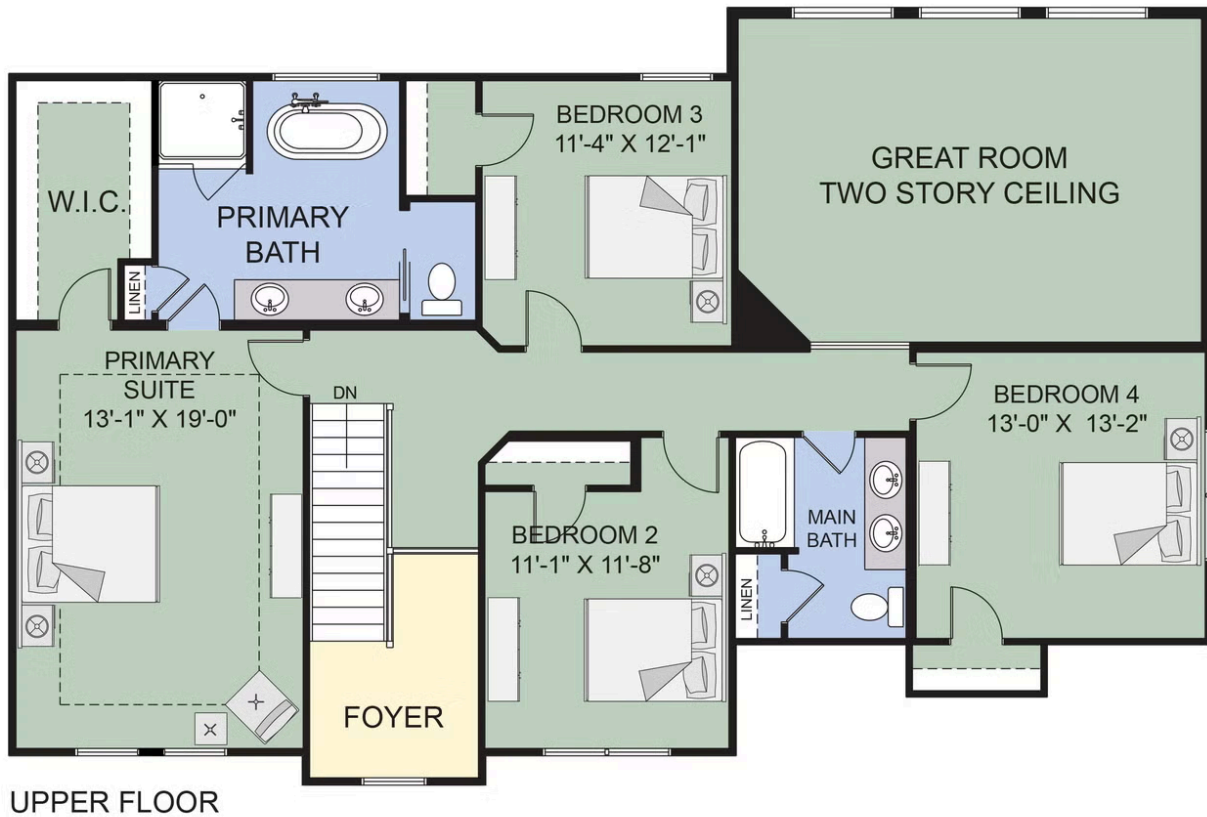
All square footage is approximate. Renderings are artist's conceptions and may vary slightly from the actual home. Homes may be built in reverse of plans shown, depending on site conditions. Minor architectural changes may be made occasionally at the option of the builder. Please contact your Sales Consultant for details.

First Floor



MAIN FLOOR

Second Floor


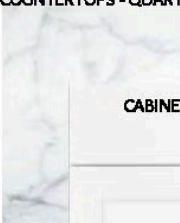
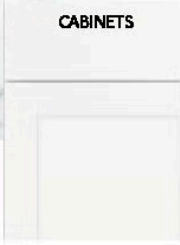

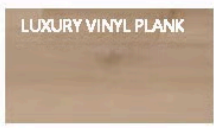





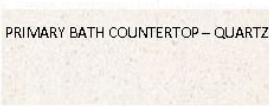
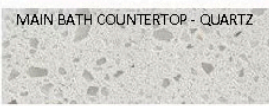





Design Selections



The Crestwood

5711 Dorothy Cr, Clarence, NY 14031
Homesite # 20

KITCHEN 	COUNTERTOPS - QUARTZ  CABINETS 	EXTERIOR 		
FLOORING LUXURY VINYL PLANK 	CARPET 	BATHROOMS PRIMARY BATH SHOWER WALL 	PRIMARY BATH CABINETS 	MAIN BATH CABINETS 
LIGHTING 	PRIMARY BATH COUNTERTOP - QUARTZ 	MAIN BATH COUNTERTOP - QUARTZ 	MAIN BATH FAUCET 	
	POWDER ROOM FAUCET 	PRIMARY BATH FAUCET 		

Disclaimer: Although every effort is made to show an accurate representation, actual products may have slight variation in color.

All square footage is approximate. Renderings are artist's conceptions and may vary slightly from the actual home. Homes may be built in reverse of plans shown, depending on site conditions. Minor architectural changes may be made occasionally at the option of the builder. Please contact your Sales Consultant for details.