



Priced From
\$776,500

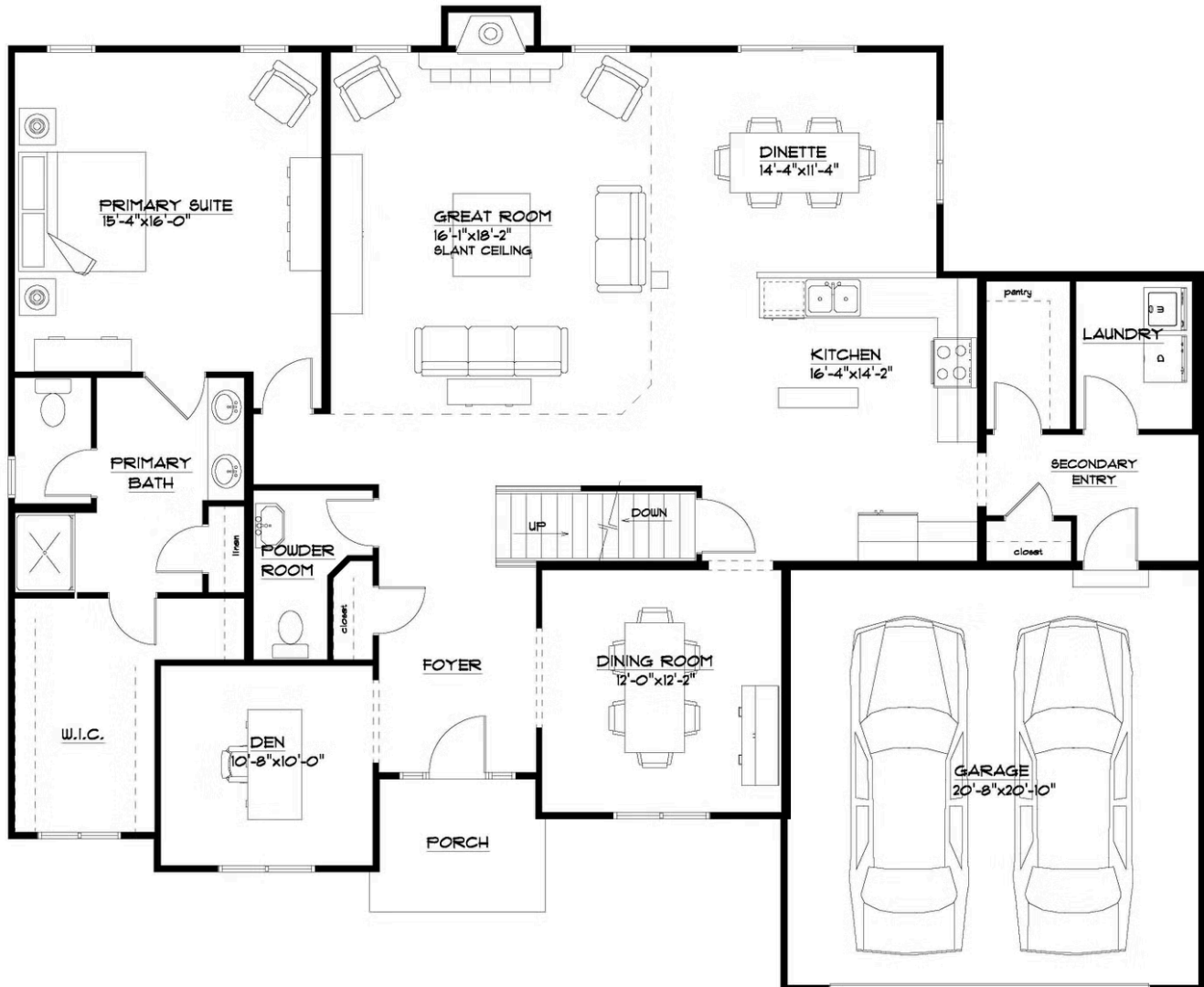
1 Elevations Available

-  2,498+ Sq. Ft.
-  3 - 4 Bedrooms
-  2.5 Bathrooms
-  2 Car Garage

Your home says a lot about you. When you choose The Lennox, what does it reflect? Clearly, you respect the proven qualities of traditional architecture, but like to put your own twist on it. This home design presents a seamless blend of classic lines with nuances that give it distinction. Inside The Lennox, you'll experience countless days relaxing in a sun-bathed great room, cozying up to the fireplace on chilly days, and sharpening your culinary skills in the gourmet kitchen. You'll ask yourself why you waited so long to finally have such a large center island where you can seat your family or guests, serve up a big buffet, or just relax with a cup of coffee while admiring the view. This home also shows that you appreciate the convenience of a first-floor primary suite—like a private retreat away from the other 2 bedrooms upstairs. The Lennox fits your lifestyle like a finely tailored suit, with extra space where you might need it—a formal dining room, den, loft, and a smartly designed family entry. When you want the balance of proven sensibility with exhilarating style, The Lennox is for you.

* Photos may depict some features no longer available.

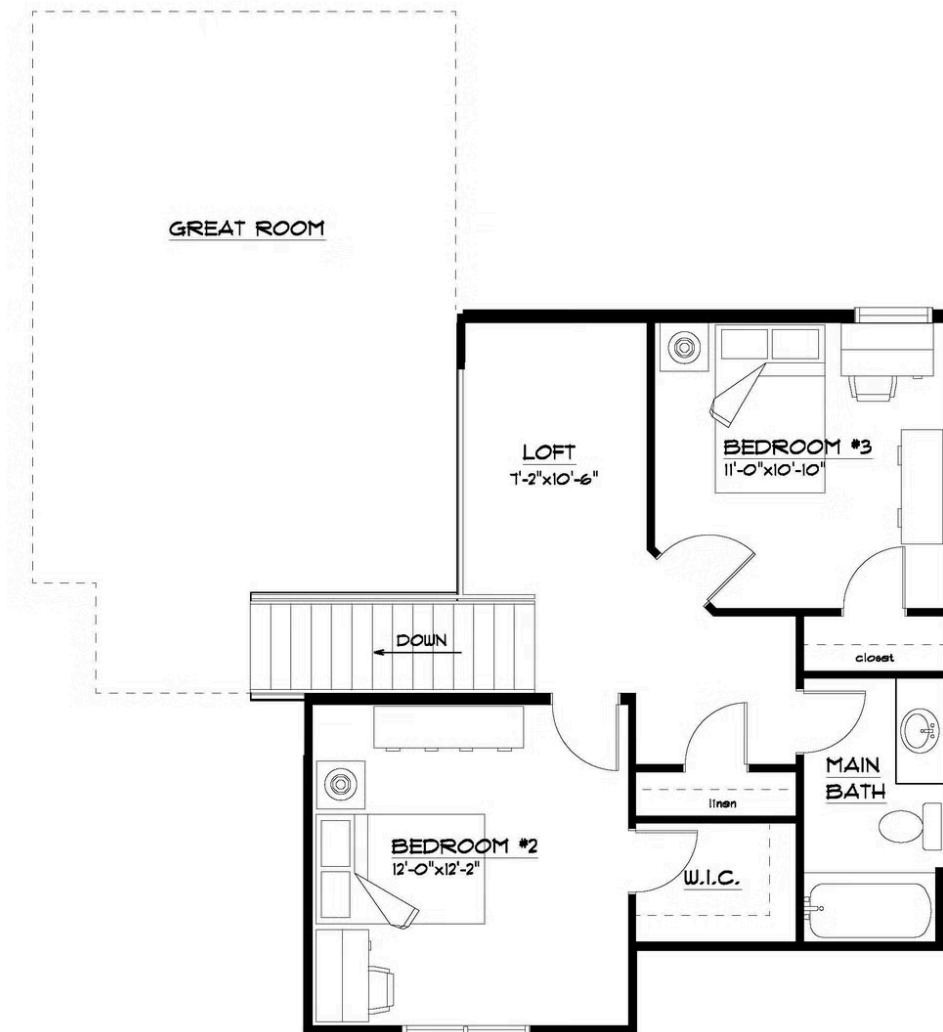
First Floor



FIRST FLOOR PLAN

THE "LENNOX 18A"
4/24/2023
LIVING AREA: 1949 S.F.
OVERALL DIMENSIONS:
61'-2" x 51'-6"

Second Floor



SECOND FLOOR PLAN

THE "LENNOX 18A"
1/4/2024
LIVING AREA: 555 S.F.

Second Floor Options