



- FLOORPLAN -

## The Hawthorne

at Cannon Woods Community

**\$776,900**

BASE PRICE

**4**

BEDROOMS

**2.5**

BATHROOMS

**2**

CAR GARAGE

**2,732**

SQ.FT.

The Hawthorne home design showcases the extensive research we've done into what today's homeowners want—smart flow from one space to the next, generous rooms flooded with natural light, and, of course, flexibility and storage. We took those elements, blended them with appealing details, 4 bedrooms, 2.5 baths, and came up with a 2,732-square-foot, 2-story floor plan that anticipates your wish list.

From the covered porch entry, step inside to an open floor plan where large windows stream light through the main level. The clerestory foyer brings even more sunlight from the upper window, filling your home with warmth and comfort from all directions.

A flex room by the entry can be transformed to the function you need or want—a home office, fitness center, den, playroom, or even a guest room. The adjacent powder room is convenient for whatever use you choose.

Is a formal dining room on your wish list? The Hawthorne includes a spacious room conveniently located near the entry. The perfect place for sitting down to family meals and entertaining guests, the floor plan has a nook between the kitchen and formal dining room that can be converted to a serving station or butler's pantry.

Follow the sight lines from the front entry to the main living area that spans the full width of this beautiful home. From one end to the other, windows fill this space with sunlight and a view of your backyard. The great room features a gas fireplace with a custom hearth and mantel that can be enjoyed from every part of the open floor plan.

**CONTACT US: CALL/TEXT (716) 202-0839**

**FORBESCAPRETTO.COM**

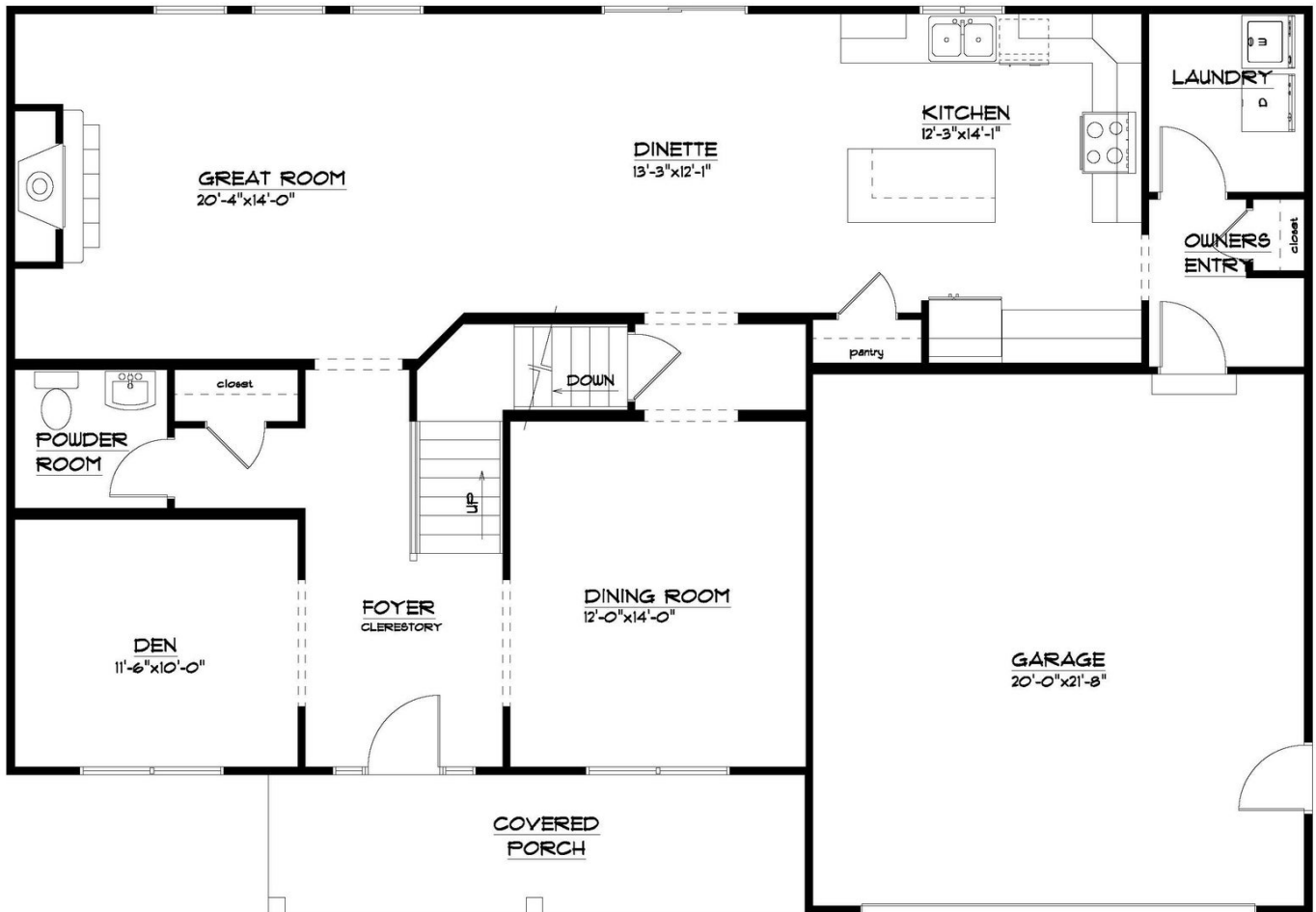


ForbesCapretto Homes continuously improves home designs and reserves the right to modify home features and specifications without notice or obligation. Square footage and measurements are approximate. Renderings of elevations are artist's concepts. Floor plans vary per elevation. ForbesCapretto Homes standard features vary by home design and location, please refer to the included features sheet for the community to define specifications. This brochure is for illustrative purposes and not part of the legal contract. Please ask Sales Associate for complete details. © 2024 ForbesCapretto Homes.

- FIRST FLOOR -

## The Hawthorne

at Cannon Woods Community



### FIRST FLOOR PLAN

THE "HAWTHORNE 22A"

10/26/2022

LIVING AREA: 1334 S.F.

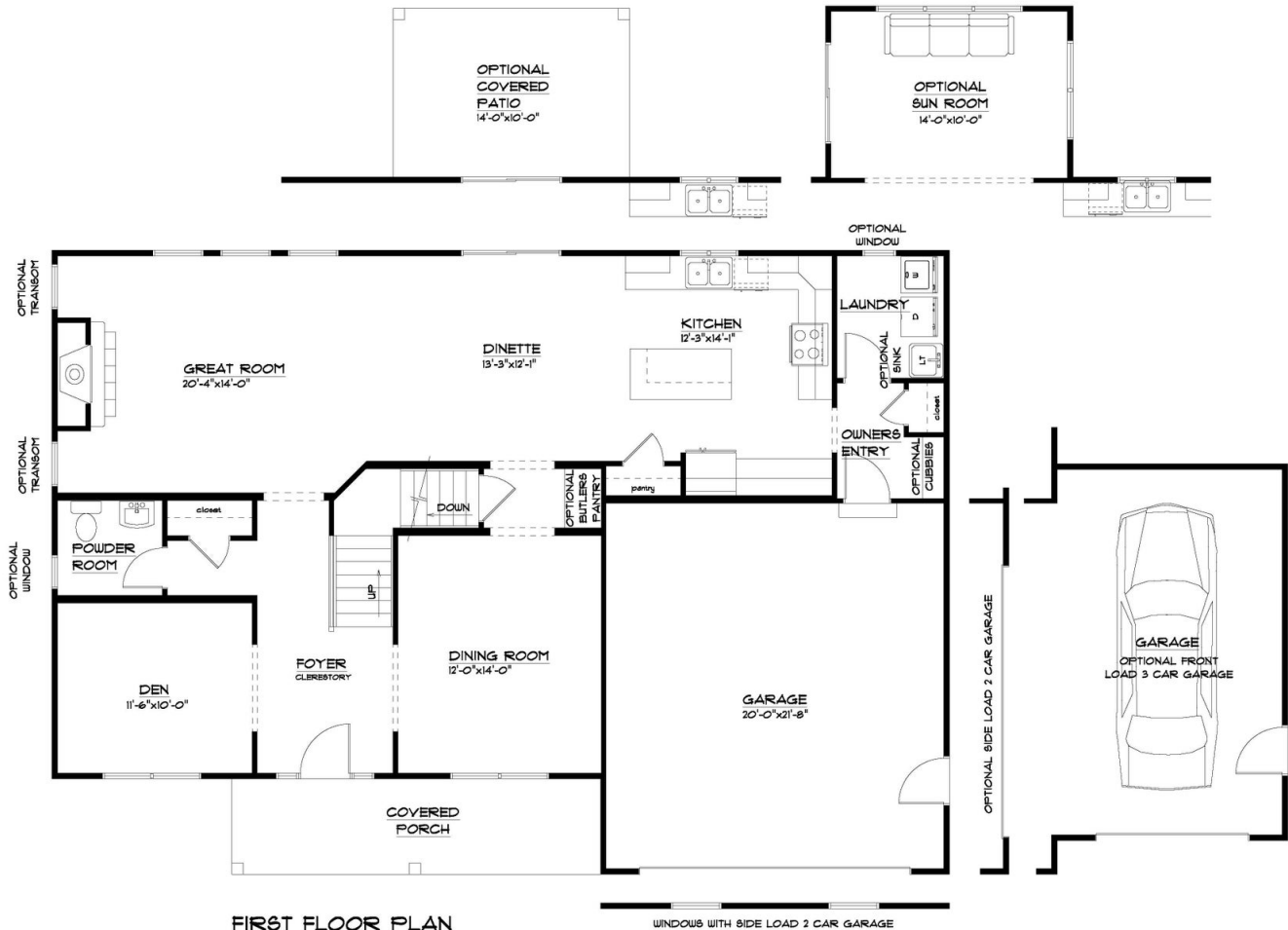
OVERALL DIMENSIONS:

53'-2" x 37'-0"

- FIRST FLOOR OPTIONS -

# The Hawthorne

at Cannon Woods Community



## FIRST FLOOR PLAN

THE "HAWTHORNE 22A"

10/26/2022

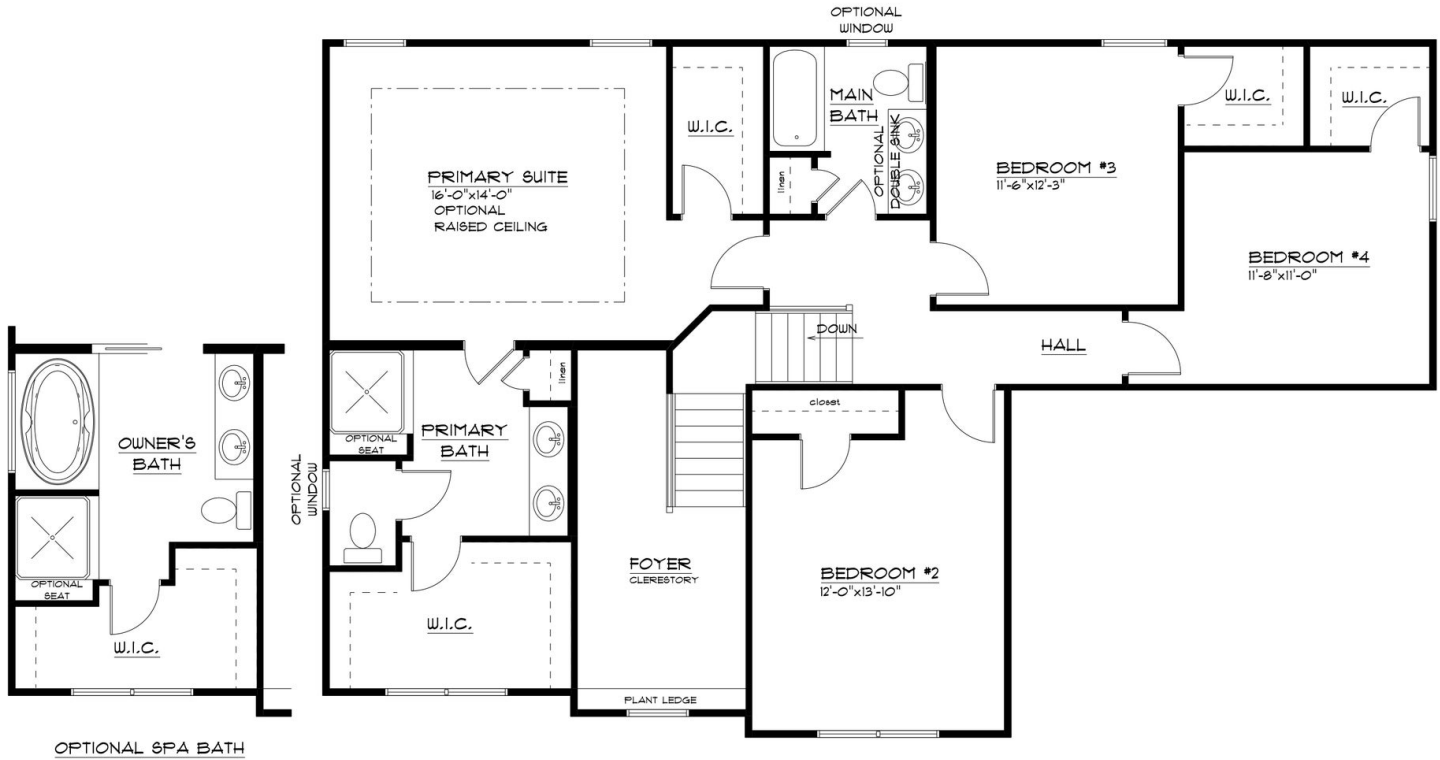
LIVING AREA: 1334 S.F.

OVERALL DIMENSIONS:  
53'-2"x31'-0"

- SECOND FLOOR OPTIONS -

# *The Hawthorne*

at Cannon Woods Community



## SECOND FLOOR PLAN

THE "HAWTHORNE 22A"

7/5/2023

LIVING AREA: 1265 S.F.

CLERESTORY 133 S.F.

TOTAL AREA 1398 S.F.

- SECOND FLOOR -

## The Hawthorne

at Cannon Woods Community



### SECOND FLOOR PLAN

THE "HAWTHORNE 22A"

7/5/2023

LIVING AREA: 1265 S.F.

CLERESTORY 133 S.F.

TOTAL AREA 1398 S.F.