



- FLOORPLAN -

The Lennox

at Island Meadows Community

\$648,500

BASE PRICE

3 - 4

BEDROOMS

2.5

BATHROOMS

2

CAR GARAGE

2,498 - 2,617

SQ.FT.

Your home says a lot about you. When you choose The Lennox, what does it reflect? Clearly, you respect the proven qualities of traditional architecture, but like to put your own twist on it. This home design presents a seamless blend of classic lines with nuances that give it distinction. Inside The Lennox, you'll experience countless days relaxing in a sun-bathed great room, cozying up to the fireplace on chilly days, and sharpening your culinary skills in the gourmet kitchen. You'll ask yourself why you waited so long to finally have such a large center island where you can seat your family or guests, serve up a big buffet, or just relax with a cup of coffee while admiring the view. This home also shows that you appreciate the convenience of a first-floor owner's suite—like a private retreat away from the other 2 bedrooms upstairs. The Lennox fits your lifestyle like a finely tailored suit, with extra space where you might need it—a formal dining room, den, loft, and a smartly designed family entry. When you want the balance of proven sensibility with exhilarating style, The Lennox is for you.

* Photos may depict some features no longer available.

CONTACT US: CALL/TEXT (716) 202-0839

FORBESCAPRETTO.COM

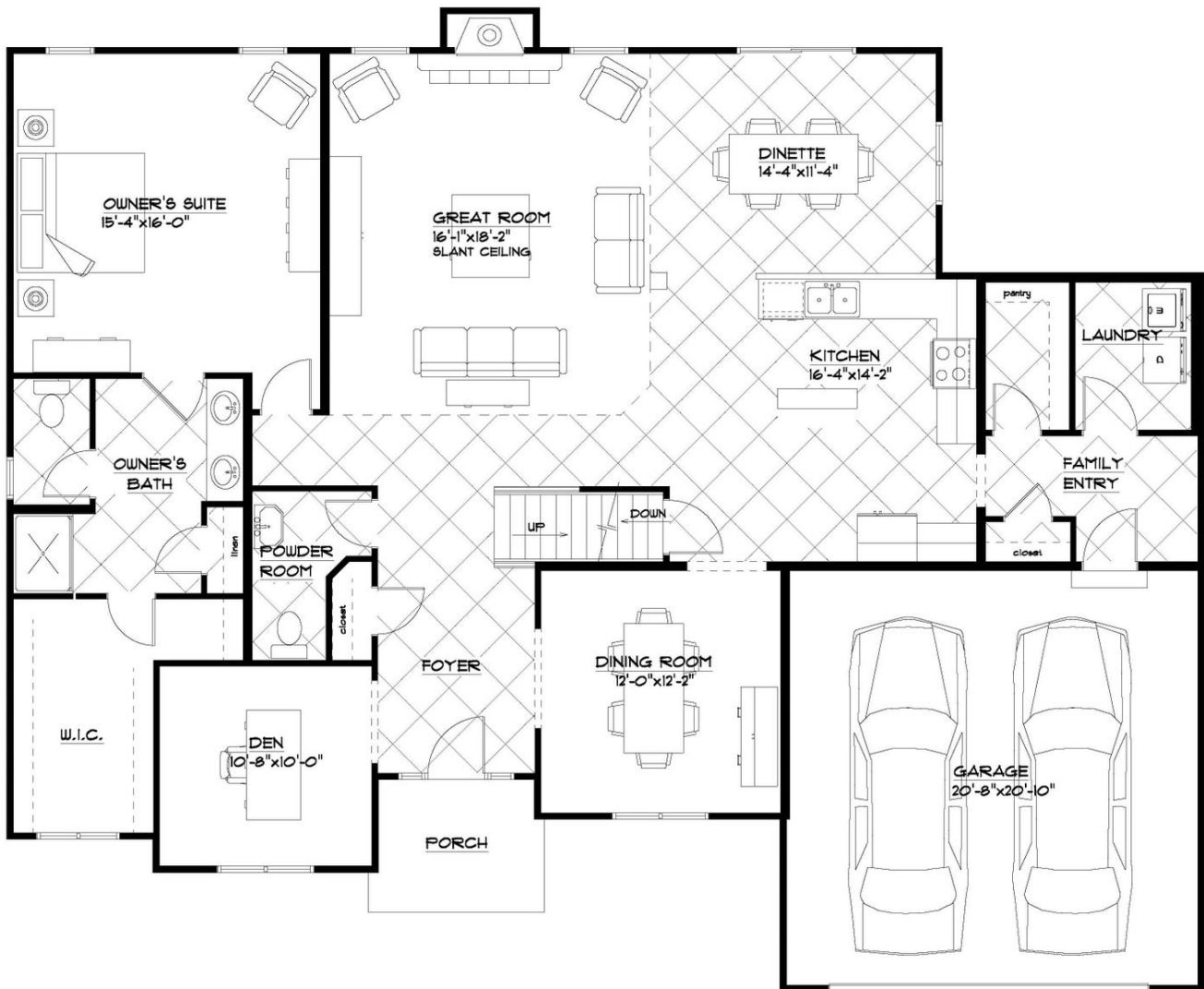


ForbesCapretto Homes continuously improves home designs and reserves the right to modify home features and specifications without notice or obligation. Square footage and measurements are approximate. Renderings of elevations are artist's concepts. Floor plans vary per elevation. ForbesCapretto Homes standard features vary by home design and location, please refer to the included features sheet for the community to define specifications. This brochure is for illustrative purposes and not part of the legal contract. Please ask Sales Associate for complete details. © 2024 ForbesCapretto Homes.

- FIRST FLOOR -

The Lennox

at Island Meadows Community



FIRST FLOOR PLAN

THE "LENNOX 184"

12/8/2021

LIVING AREA: 1949 S.F.

OVERALL DIMENSIONS:

61'-2" x 51'-6"

CONTACT US: CALL/TEXT (716) 202-0839

FORBESCAPRETTO.COM

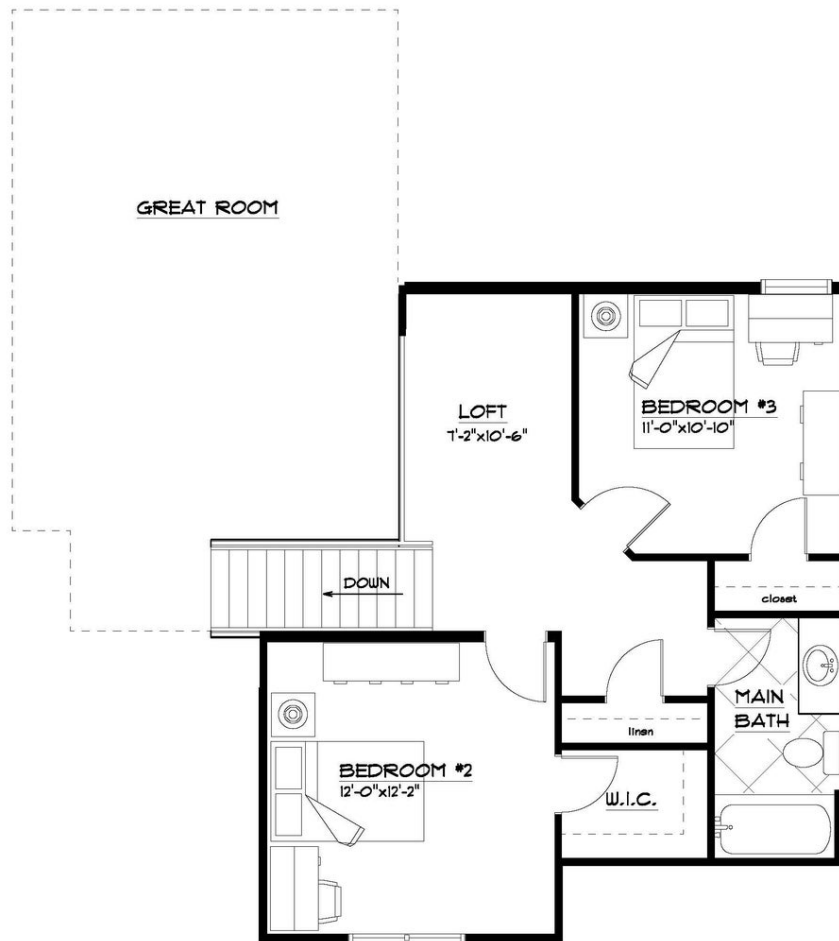


ForbesCapretto Homes continuously improves home designs and reserves the right to modify home features and specifications without notice or obligation. Square footage and measurements are approximate. Renderings of elevations are artist's concepts. Floor plans vary per elevation. ForbesCapretto Homes standard features vary by home design and location, please refer to the included features sheet for the community to define specifications. This brochure is for illustrative purposes and not part of the legal contract. Please ask Sales Associate for complete details. © 2024 ForbesCapretto Homes.

- SECOND FLOOR -

The Lennox

at Island Meadows Community



SECOND FLOOR PLAN

THE "LENNOX 18A"

5/3/2021

LIVING AREA: 555 S.F.