



- FLOORPLAN -

## The Avery

at Island Meadows Community

**\$550,900**

BASE PRICE

**3**

BEDROOMS

**2**

BATHROOMS

**2**

CAR GARAGE

**1,812 - 2,079**

SQ.FT.

You feel as though you'll know the perfect home when you see it. It will sing to you, a pleasing chorus that says joy, comfort, and safety. While some homes might hum a little tune, The Avery, performs an aria. Showcasing a creative approach to single-level living, you'll discover that someone understands you want more than the basic, old reliable ranch design. Within this home over 1,800 square feet, you will live large with the smart layout—like the careful placement of every feature to give you the full advantage of its value. Like every Forbes Capretto design, we approach it with the understanding that this isn't just a house. It's the center of your world, where you manage every detail of your life—from making entertaining as effortless as possible to providing convenient storage, and plenty of it. The Avery combines classic architecture for the exterior with contemporary interior style. Open spaces, large windows, and features that reflect current trends are all incorporated in this 3-bedroom, 2-bath home. Wherever you are in your life, first-time homebuyer or celebrating your now-empty nest, come and see The Avery, and listen to the harmonies that represent your life here.

\* Photos may depict some features no longer available.

CONTACT US: CALL/TEXT (716) 202-0839

FORBESCAPRETTO.COM

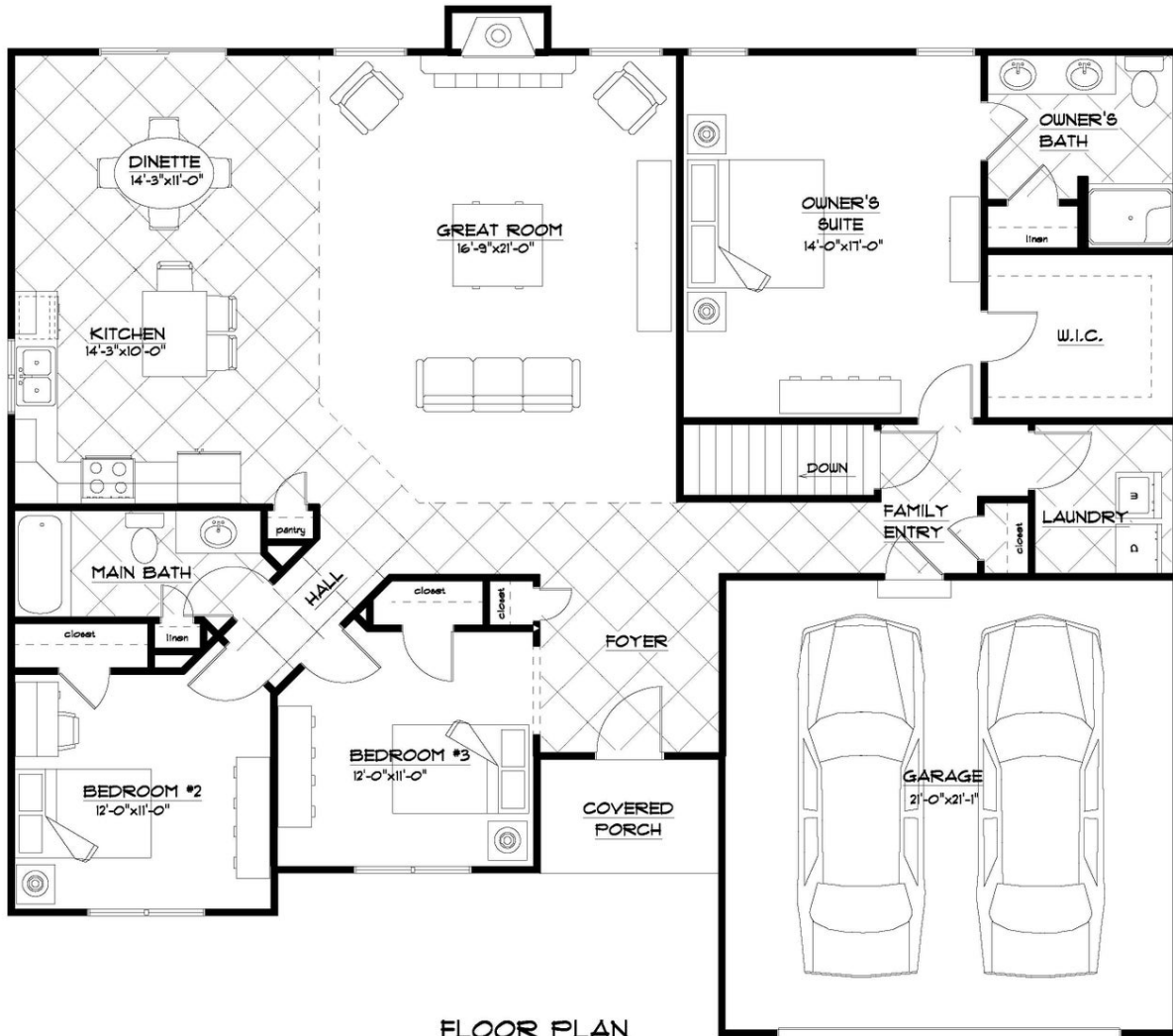


ForbesCapretto Homes continuously improves home designs and reserves the right to modify home features and specifications without notice or obligation. Square footage and measurements are approximate. Renderings of elevations are artist's concepts. Floor plans vary per elevation. ForbesCapretto Homes standard features vary by home design and location, please refer to the included features sheet for the community to define specifications. This brochure is for illustrative purposes and not part of the legal contract. Please ask Sales Associate for complete details. © 2024 ForbesCapretto Homes.

- FIRST FLOOR -

## The Avery

at Island Meadows Community



### FLOOR PLAN

THE "AVERY 22A"  
3/1/2022  
LIVING AREA: 1812 S.F.  
OVERALL DIMENSIONS:  
55'-0" x 41'-4"

CONTACT US: CALL/TEXT (716) 202-0839

FORBESCAPRETTO.COM



ForbesCapretto Homes continuously improves home designs and reserves the right to modify home features and specifications without notice or obligation. Square footage and measurements are approximate. Renderings of elevations are artist's concepts. Floor plans vary per elevation. ForbesCapretto Homes standard features vary by home design and location, please refer to the included features sheet for the community to define specifications. This brochure is for illustrative purposes and not part of the legal contract. Please ask Sales Associate for complete details. © 2024 ForbesCapretto Homes.