



Priced From
\$528,900

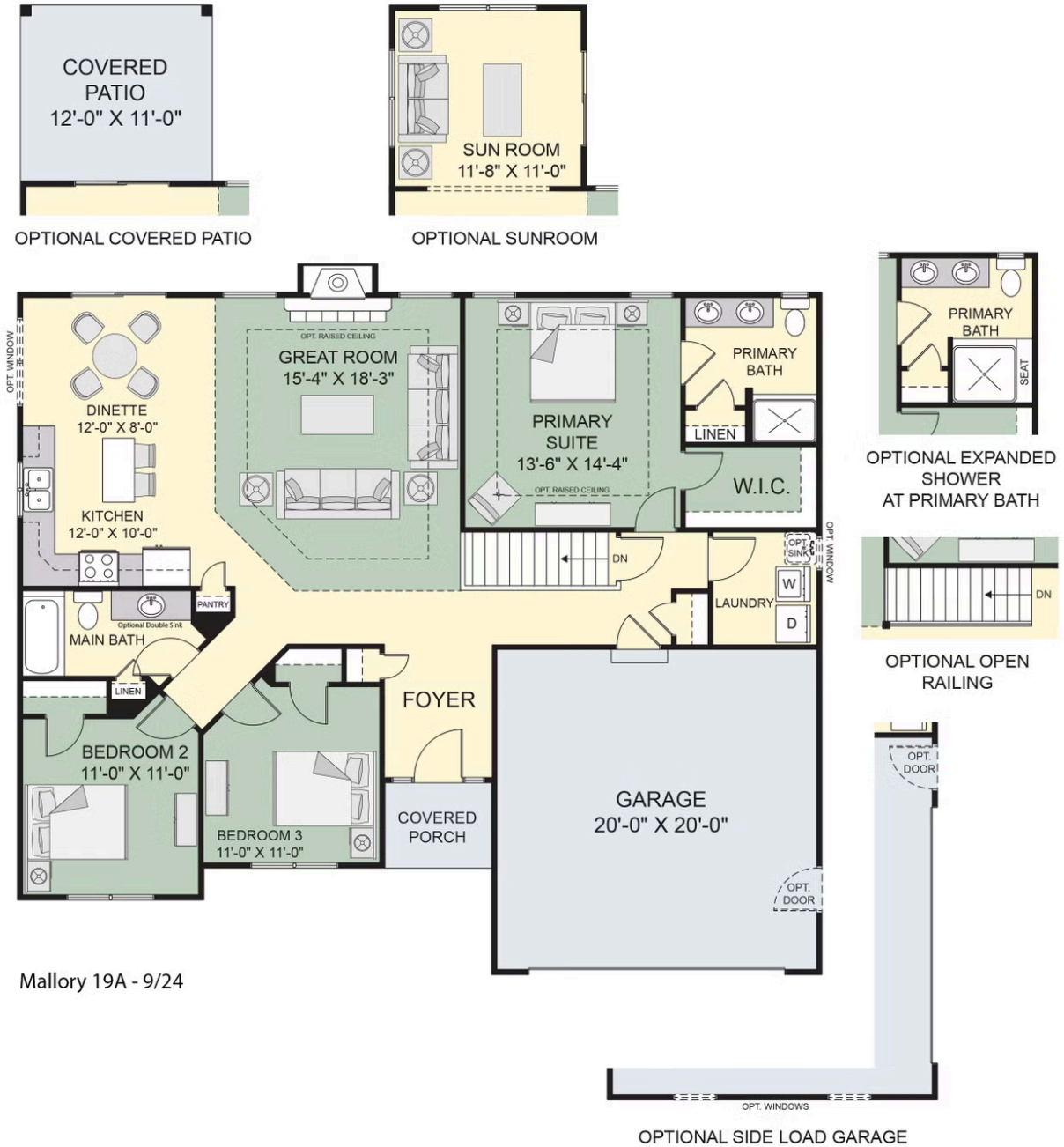
5 Elevations Available

-  1,520+ Sq. Ft.
-  3 Bedrooms
-  2 Bathrooms
-  2 Car Garage

The heart of the Mallory is the common great room, kitchen and dining area, which provides exceptional openness for visual interaction and entertainment. The family-efficient floor plan is designed for natural traffic flow. Two bedrooms share a bath upfront, while the primary suite is positioned perfectly for privacy in the back of the home, with a spacious closet and well equipped bath with dual sinks and large shower.

* Photos may depict some features no longer available.

Main Floor with Options



Mallory 19A - 9/24

All square footage is approximate. Renderings are artist's conceptions and may vary slightly from the actual home. Homes may be built in reverse of plans shown, depending on site conditions. Minor architectural changes may be made occasionally at the option of the builder. Please contact your Sales Consultant for details.