



Priced From
\$484,910

4 Elevations Available

-  1,550+ Sq. Ft.
-  2 - 3 Bedrooms
-  2 - 3 Bathrooms
-  2 Car Garage

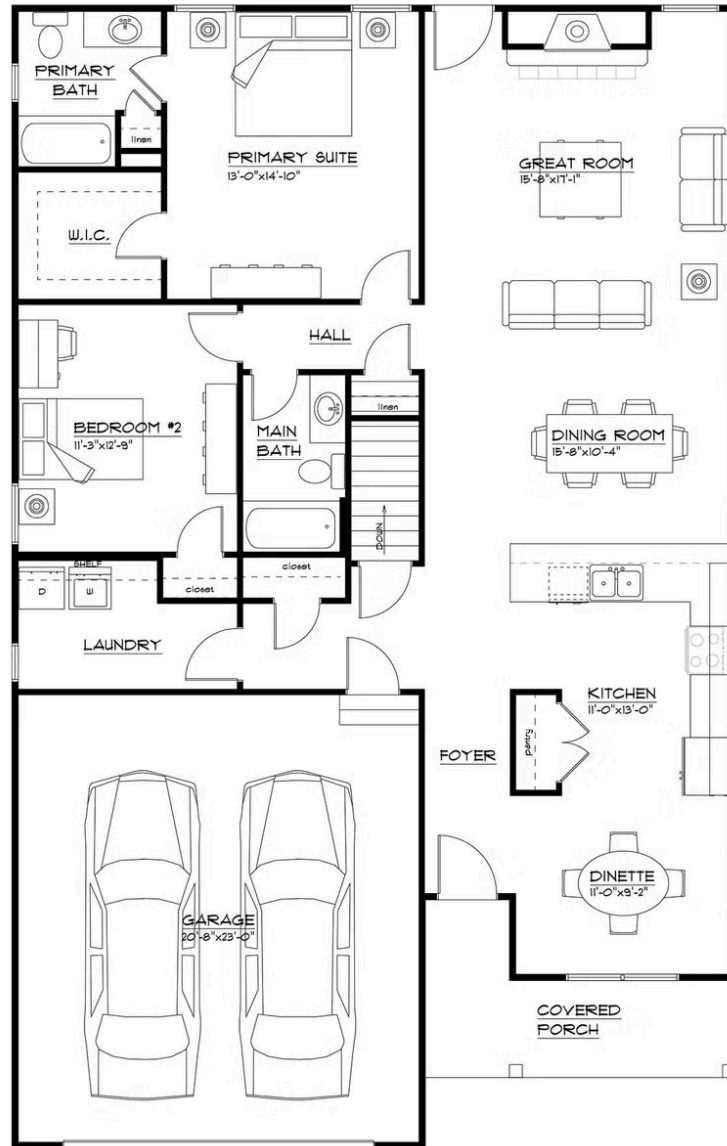
Welcome to **The Angelina**, a thoughtfully designed home that combines modern convenience with timeless style. Starting at **1,550 square feet**, this **two-bedroom, two-bath** layout offers a spacious and open floor plan, ideal for comfortable living and effortless entertaining.

Step inside to find the **open kitchen and dinette**—perfect for gathering, seamlessly flowing into the Dining room and **bright and airy great room**, complete with a cozy **gas fireplace**. A **first-floor laundry room** adds everyday convenience, while the **attached two-car garage** provides ample storage and easy access.

For those seeking additional space, The Angelina offers flexible expansion options. Personalize your home with an **optional second story**, featuring either a **loft and third bedroom** or a **loft, third bedroom, and third full bath**, creating even more room to suit your needs. Enhance your living space further with a **sunroom or covered patio**, perfect for relaxing and enjoying the outdoors.

Whether you're looking for a stylish, single-level home or additional space for family and guests, The Angelina adapts beautifully to your lifestyle.

Discover the possibilities—make The Angelina your own!



FLOOR PLAN

THE "ANGELINA 225"

2/3/2025

LIVING AREA: 1550 S.F.

OVERALL DIMENSIONS:

31'-4" x 59'-0"

Ranch
The Angelina
Pleasant Creek

NEW HOME SPECIALIST
Hannah
Call Us @ 716-202-0839
sales@forbeshomes.com

