



Priced From
\$514,900

5 Elevations Available

-  2,292+ Sq. Ft.
-  4 Bedrooms
-  2.5 Bathrooms
-  2 Car Garage

It's not the sum of the square feet that defines your home, but how smartly it is used. With The Dorchester, Forbes Capretto Homes presents a design that weaves function through every bit of the 2,292 square feet. This sensible, stylish floor plan flows easily from room to room, providing the storage you need; as well as privacy that's perfectly placed. The first level of this two-story design offers an open floor plan where your eat-in kitchen and spacious great room comfortably bring everyone together- and with a fireplace in the great room for cozy gatherings. The kitchen is outfitted with ample cabinets and counter space. Coupled with the sensible placement of appliances, adjacent family entry, powder room, and walk-in pantry, this essential area is an equal blend of beauty and efficiency. The flex room by the foyer can become your home office, or maybe a media room or hobby studio. Add optional bookcases and French doors to convert this room into a showplace. Situated on the second floor, all 4 bedrooms afford you the privacy you want for your bedrooms. The primary bedroom is generous in size, including a full bath and spacious walk-in closet to complete your "suite" experience. Three more bedrooms share a second full bath upstairs. We also situated the laundry room on the second floor, where it just makes more sense. As with each of our [floor plans](#), [Forbes Capretto Homes](#) gives you a variety of ways to personalize The Dorchester. When you start with a home as detailed and creative as The Dorchester, you discover that the perfect home is within reach.

You'll live large in The Dorchester floor plan, which utilizes every square foot to its full advantage. [Contact us at Forbes Capretto](#) homes to see how The Dorchester can become your dream home.

Forbes Capretto Homes is a leading homebuilder in Western New York. If you're thinking about buying or building a new home in the Buffalo suburbs, we'd love to [share](#) our experience and ideas with you.

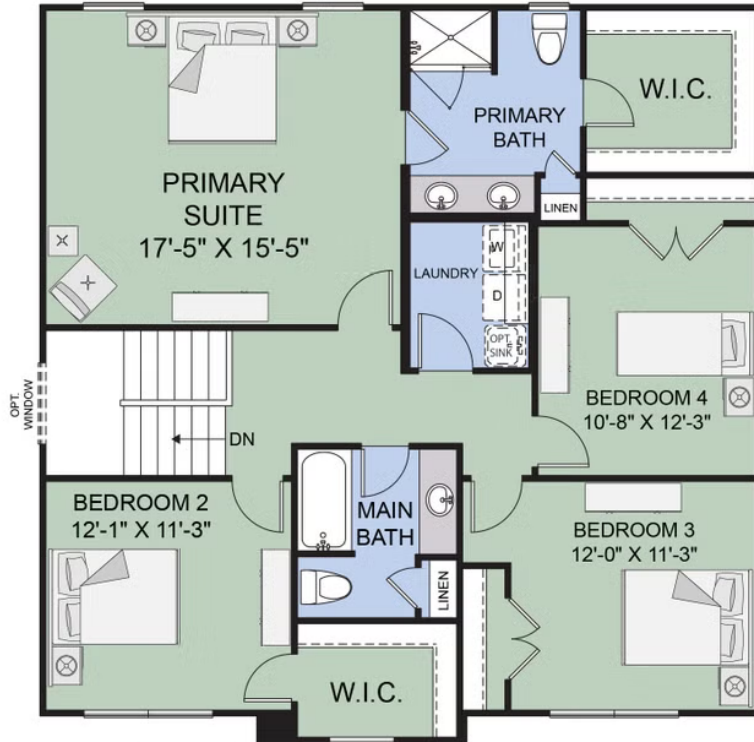
All square footage is approximate. Renderings are artist's conceptions and may vary slightly from the actual home. Homes may be built in reverse of plans shown, depending on site conditions. Minor architectural changes may be made occasionally at the option of the builder. Please contact your Sales Consultant for details.

First Floor

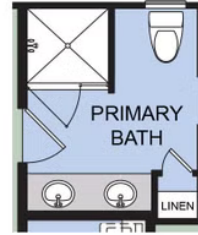


All square footage is approximate. Renderings are artist's conceptions and may vary slightly from the actual home. Homes may be built in reverse of plans shown, depending on site conditions. Minor architectural changes may be made occasionally at the option of the builder. Please contact your Sales Consultant for details.

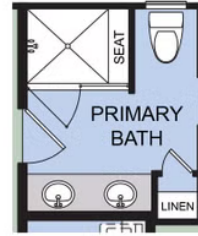
Second Floor



UPPER FLOOR
Dorchester 24A - 7/24



OPT. ENLARGED SHOWER



OPT. ENLARGED SHOWER
W/ SEAT