



- FLOORPLAN -

The Brady

at Pleasant Creek Community

\$635,500

BASE PRICE

4 - 5

BEDROOMS

2.5 - 4.5

BATHROOMS

2

CAR GARAGE

3,626 - 3,907

SQ.FT.

Timeless and classic accurately describes the charm that this home exudes. A sense of warmth and elegance is provided as you enter this home. Your attention is grabbed by the beautiful L-shaped staircase in the two story foyer. Formal Living and Dining rooms at the front of the house provide for easy entertaining while the rear is filled with everyday living space. Your gourmet kitchen is spacious enough for two chefs and features a generous amount of quartz counter space. Owner's suite provides ample space and access to adjoining bath. Completing the Owner's suite is a large walk-in closet. Three additional bedrooms, two full bathrooms and a huge laundry room complete the second level. Birdsong amenities include hiking trails through acres and acres of conservation area. Total sq ft includes clerestory. Photos may depict another home.

CONTACT US: (716) 202-0839

FORBESCAPRETTO.COM

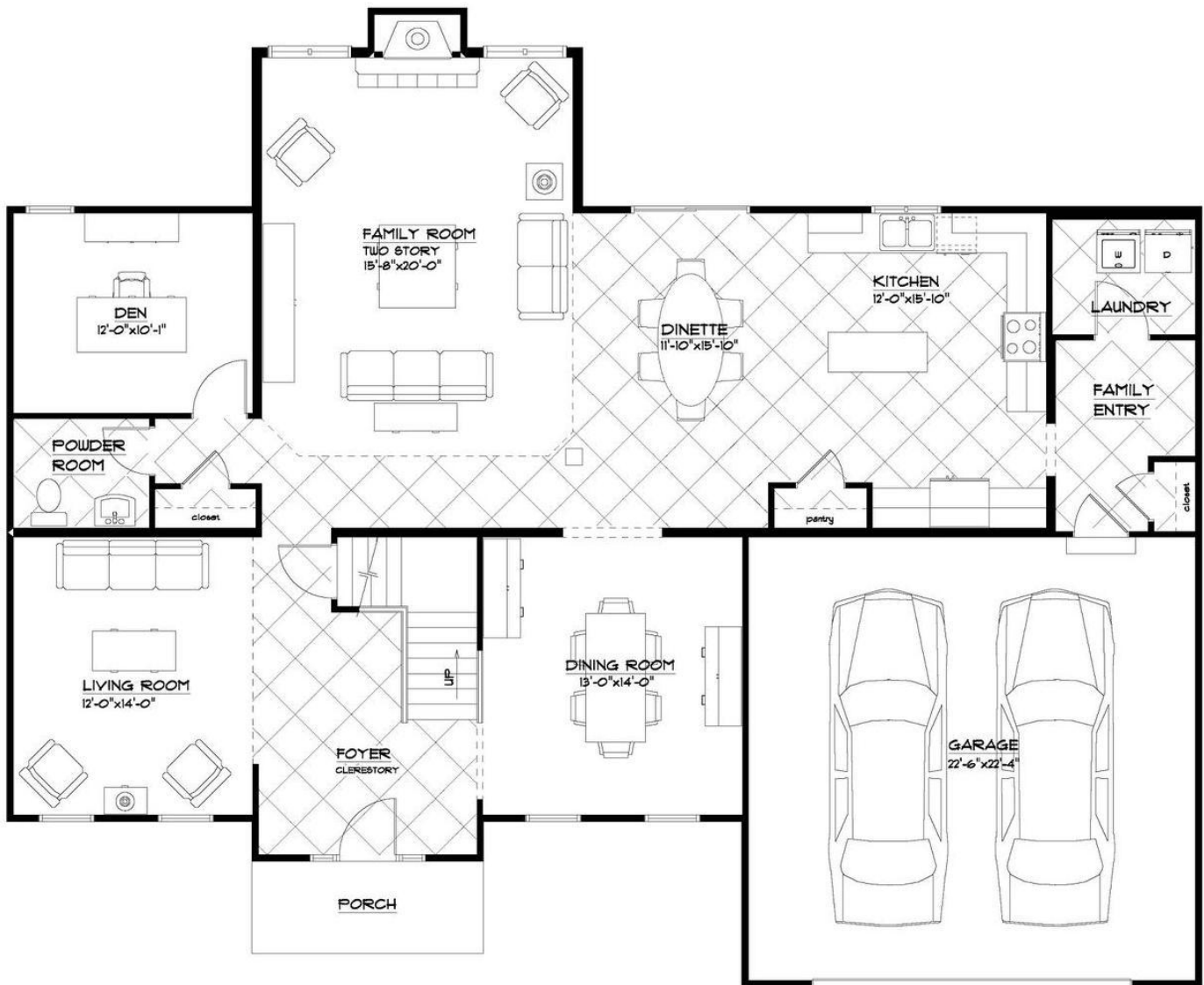


ForbesCapretto Homes continuously improves home designs and reserves the right to modify home features and specifications without notice or obligation. Square footage and measurements are approximate. Renderings of elevations are artist's concepts. Floor plans vary per elevation. ForbesCapretto Homes standard features vary by home design and location, please refer to the included features sheet for the community to define specifications. This brochure is for illustrative purposes and not part of the legal contract. Please ask Sales Associate for complete details. © 2022 ForbesCapretto Homes.

- FIRST FLOOR -

The Brady

at Pleasant Creek Community



FIRST FLOOR PLAN

THE "BRADY 19A"
 5/10/2021
 LIVING AREA: 1691 S.F.
 OVERALL DIMENSIONS:
 60'-2" x 49'-4"

CONTACT US: (716) 202-0839

FORBESCAPRETTO.COM

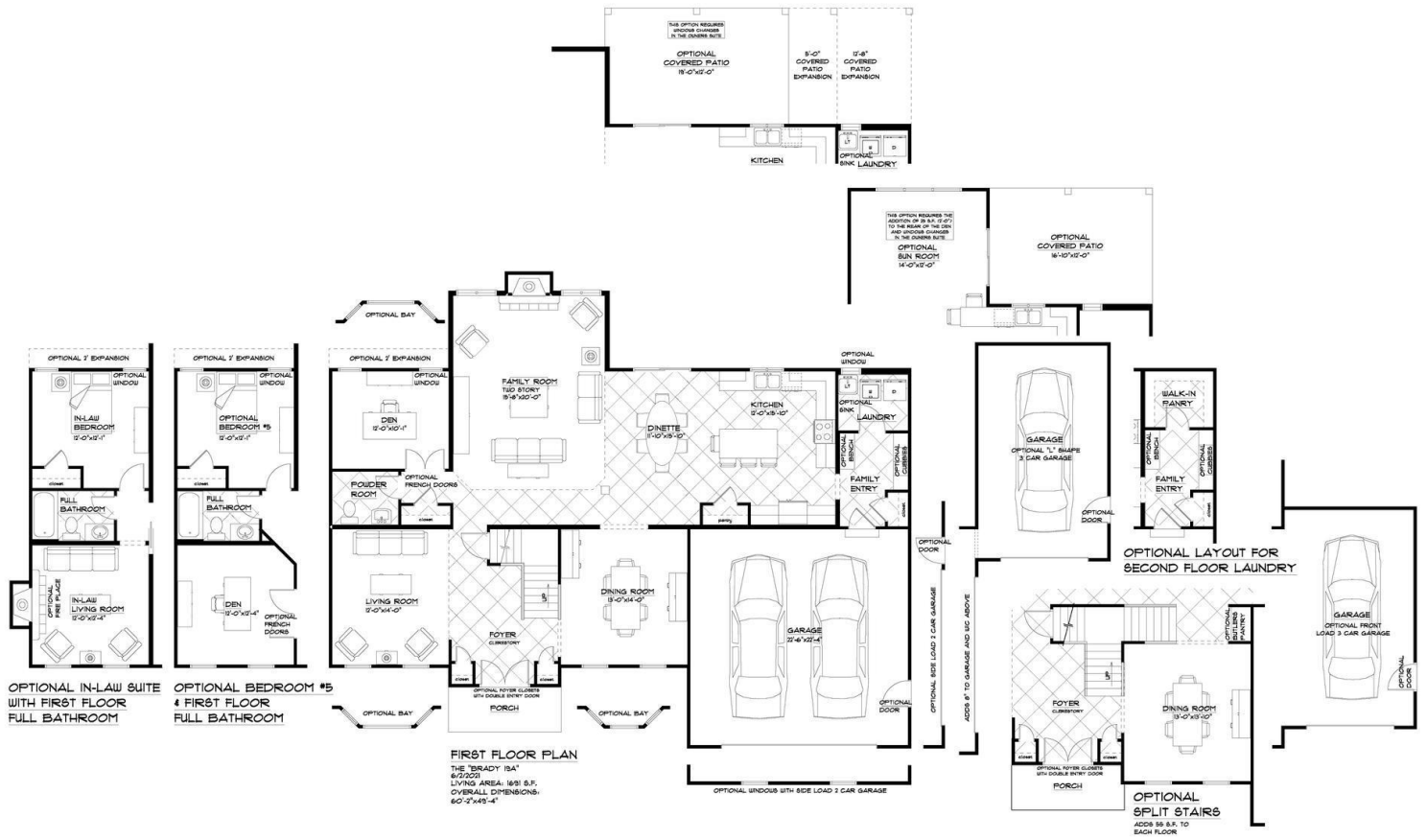


ForbesCapretto Homes continuously improves home designs and reserves the right to modify home features and specifications without notice or obligation. Square footage and measurements are approximate. Renderings of elevations are artist's concepts. Floor plans vary per elevation. ForbesCapretto Homes standard features vary by home design and location, please refer to the included features sheet for the community to define specifications. This brochure is for illustrative purposes and not part of the legal contract. Please ask Sales Associate for complete details. © 2022 ForbesCapretto Homes.

- FIRST FLOOR OPTIONS -

The Brady

at Pleasant Creek Community



CONTACT US: (716) 202-0839

FORBESCAPRETTO.COM



- SECOND FLOOR -

The Brady

at Pleasant Creek Community



SECOND FLOOR PLAN

THE "BRADY 13A"
5/1/2021
LIVING AREA: 1485 S.F.
CLERESTORY 450 S.F.
TOTAL AREA 1935 S.F.

CONTACT US: (716) 202-0839

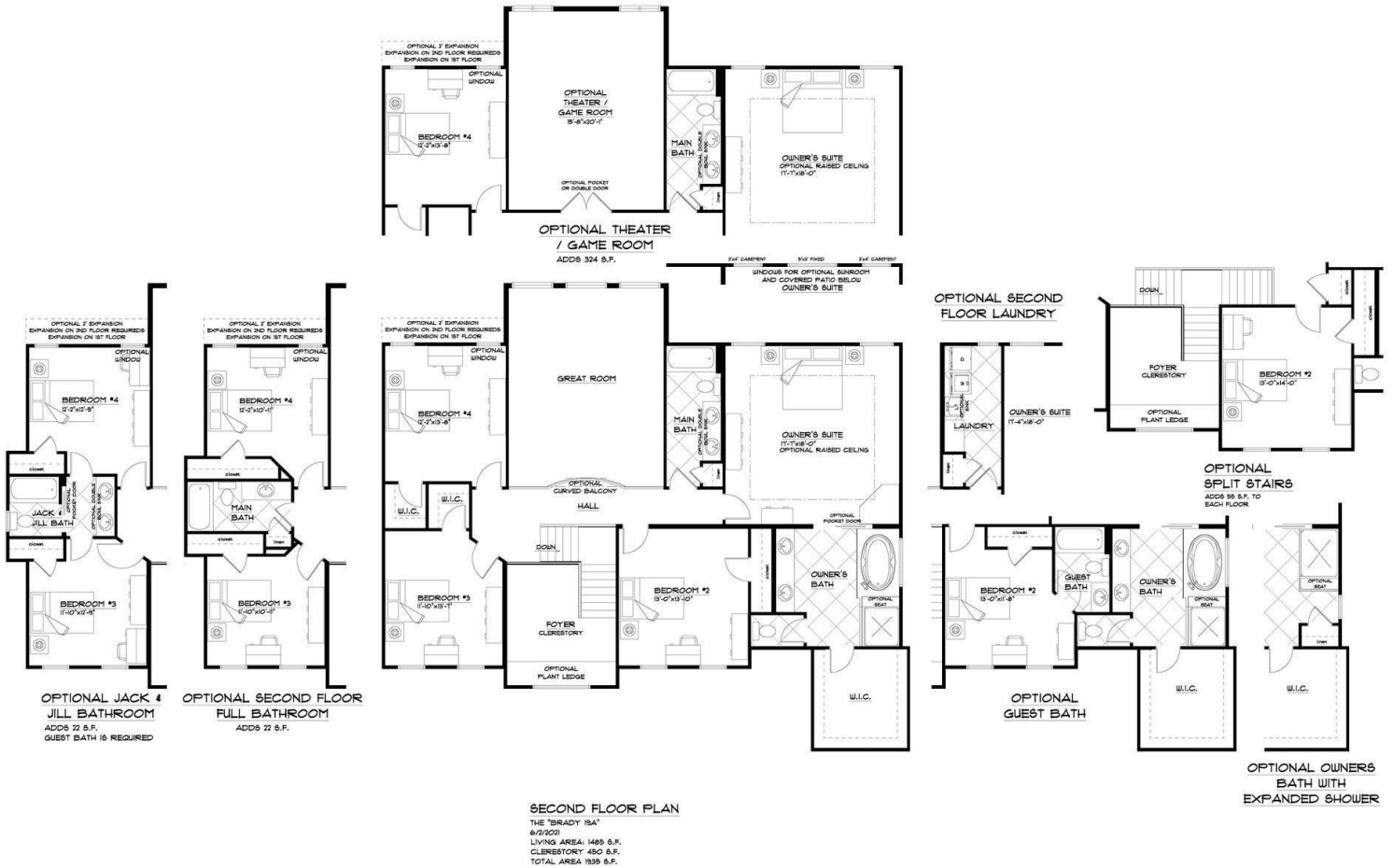
FORBESCAPRETTO.COM



- SECOND FLOOR OPTIONS -

The Brady

at Pleasant Creek Community



CONTACT US: (716) 202-0839

FORBESCAPRETTO.COM



ForbesCapretto Homes continuously improves home designs and reserves the right to modify home features and specifications without notice or obligation. Square footage and measurements are approximate. Renderings of elevations are artist's concepts. Floor plans vary per elevation. ForbesCapretto Homes standard features vary by home design and location, please refer to the included features sheet for the community to define specifications. This brochure is for illustrative purposes and not part of the legal contract. Please ask Sales Associate for complete details. © 2022 ForbesCapretto Homes.