



- FLOORPLAN -

The Ryley

at Pleasant Creek Community

\$625,500

BASE PRICE

4

BEDROOMS

2.5 - 3.5

BATHROOMS

2

CAR GARAGE

2,770 - 2,903

SQ.FT.

Looking at a home in a one-dimensional floor plan can be challenging. So let's walk into The Ryley and see how it fits. This Forbes Capretto Homes exclusive design was created with flexibility in mind. When you walk into the foyer from the covered porch, you're greeted by a room with rich plank floors. Do you see it as a formal living room, home office, playroom, study space for the kids, or maybe a long-awaited hobby studio? We call this room "owner's choice". You're then just a few steps away from the welcoming open concept in the main living area. Your center island kitchen flows without borders to the dining area and great room. Feel the energy here as your family lives happen, from quiet moments to laughter-filled gatherings. In the kitchen, you're never at a loss for space, whether in the walk-in pantry that can handle even the largest size packages of paper and cleaning products or the gleaming counterspace. Over by the family entry from the garage, there's the sound of your favorite people coming and going. The second story of The Ryley delivers on the quiet times: an owner's suite that pampers you and three more bedrooms that won't cramp anyone's style. The laundry center is also upstairs, which provides the utmost convenience. And because we try to think of how you live each day, we put a closet up there, where you can keep a vacuum cleaner and other supplies so you don't have to run downstairs. Are you feeling life in The Ryley yet? It's a wonderful experience!

* Photos may depict some features no longer available.

CONTACT US: CALL/TEXT (716) 202-0839

FORBESCAPRETTO.COM

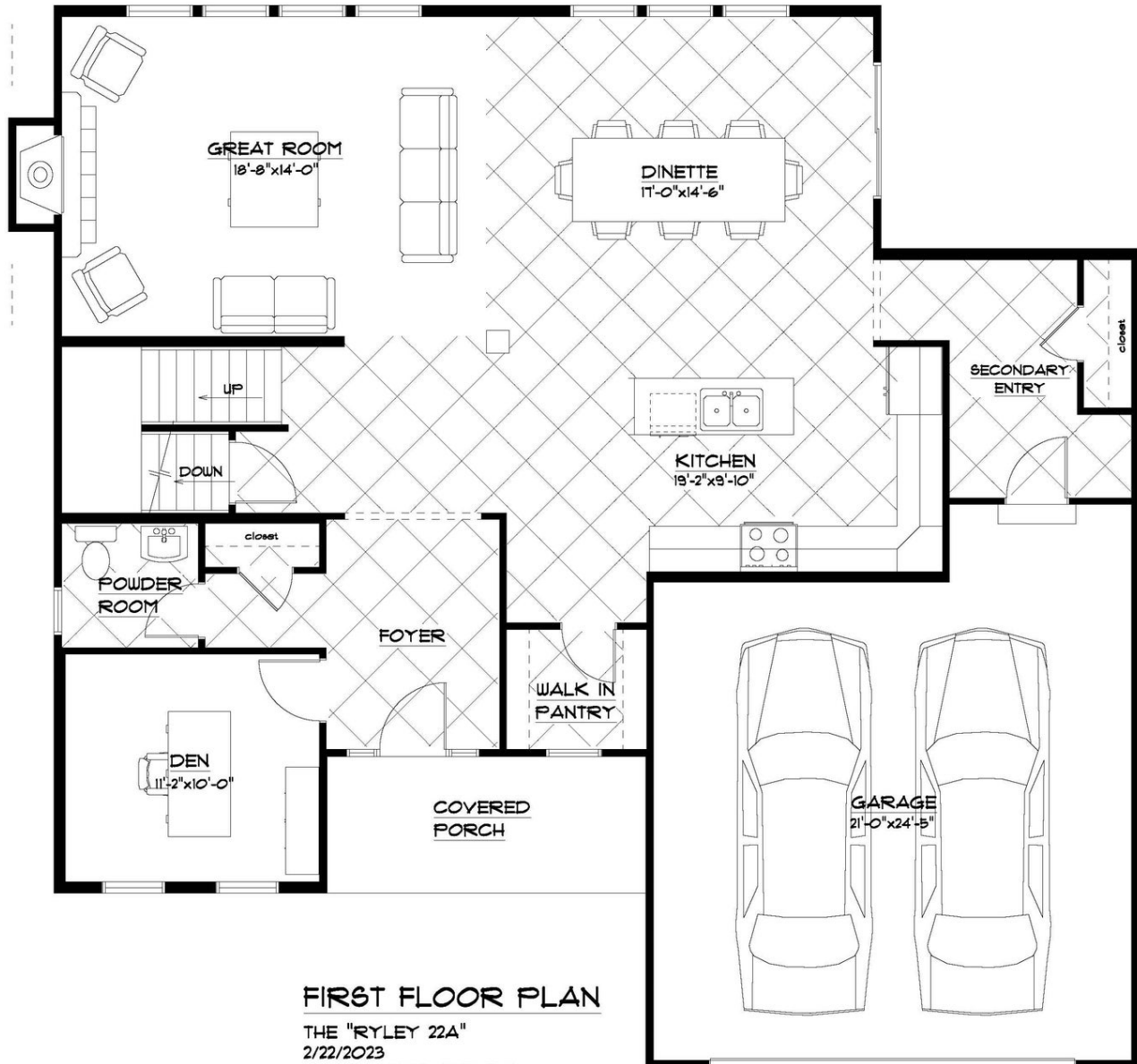


ForbesCapretto Homes continuously improves home designs and reserves the right to modify home features and specifications without notice or obligation. Square footage and measurements are approximate. Renderings of elevations are artist's concepts. Floor plans vary per elevation. ForbesCapretto Homes standard features vary by home design and location, please refer to the included features sheet for the community to define specifications. This brochure is for illustrative purposes and not part of the legal contract. Please ask Sales Associate for complete details. © 2024 ForbesCapretto Homes.

- FIRST FLOOR -

The Ryley

at Pleasant Creek Community



CONTACT US: CALL/TEXT (716) 202-0839

FORBESCAPRETTO.COM

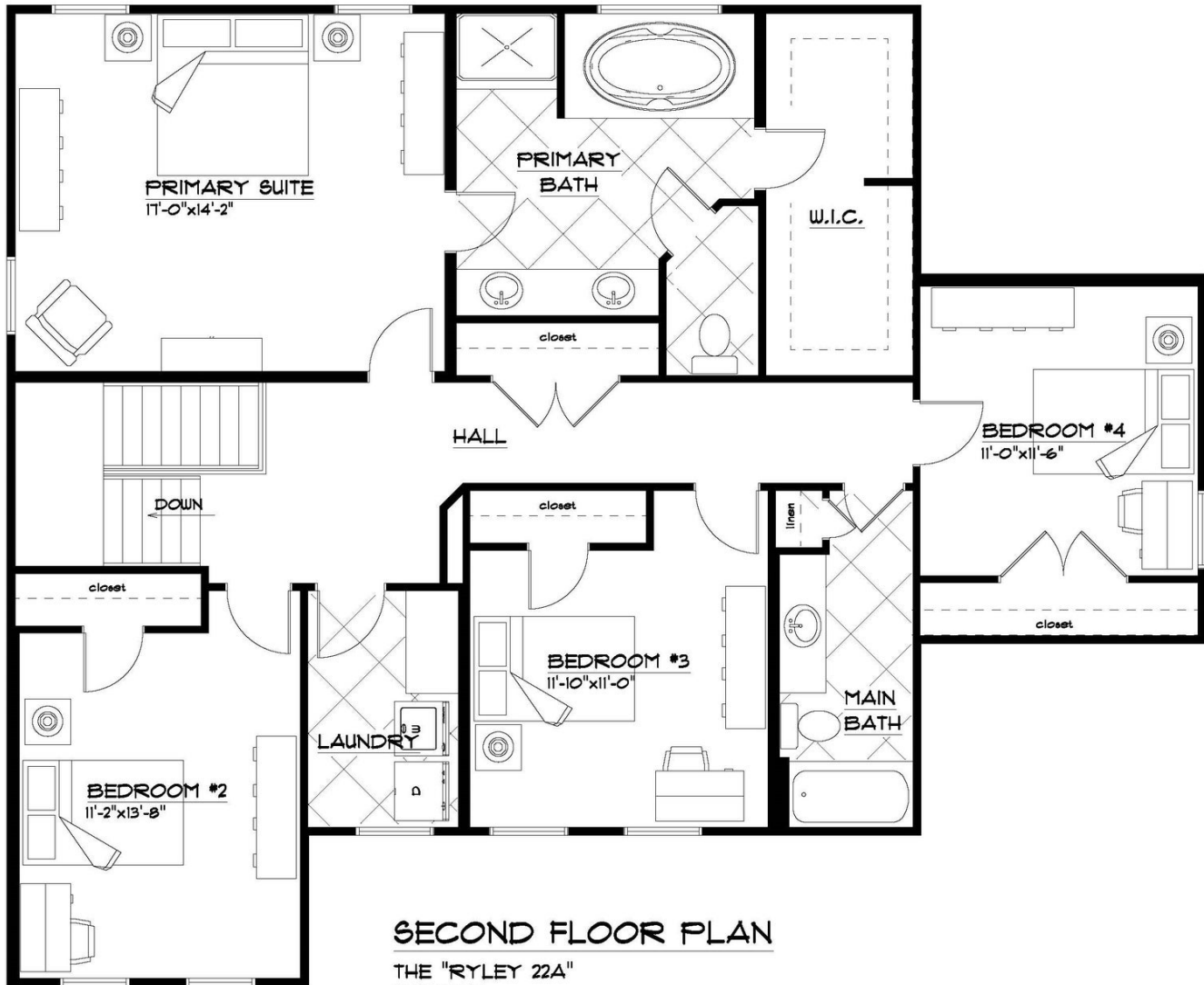


ForbesCapretto Homes continuously improves home designs and reserves the right to modify home features and specifications without notice or obligation. Square footage and measurements are approximate. Renderings of elevations are artist's concepts. Floor plans vary per elevation. ForbesCapretto Homes standard features vary by home design and location, please refer to the included features sheet for the community to define specifications. This brochure is for illustrative purposes and not part of the legal contract. Please ask Sales Associate for complete details. © 2024 ForbesCapretto Homes.

- SECOND FLOOR -

The Ryley

at Pleasant Creek Community



SECOND FLOOR PLAN

THE "RYLEY 22A"

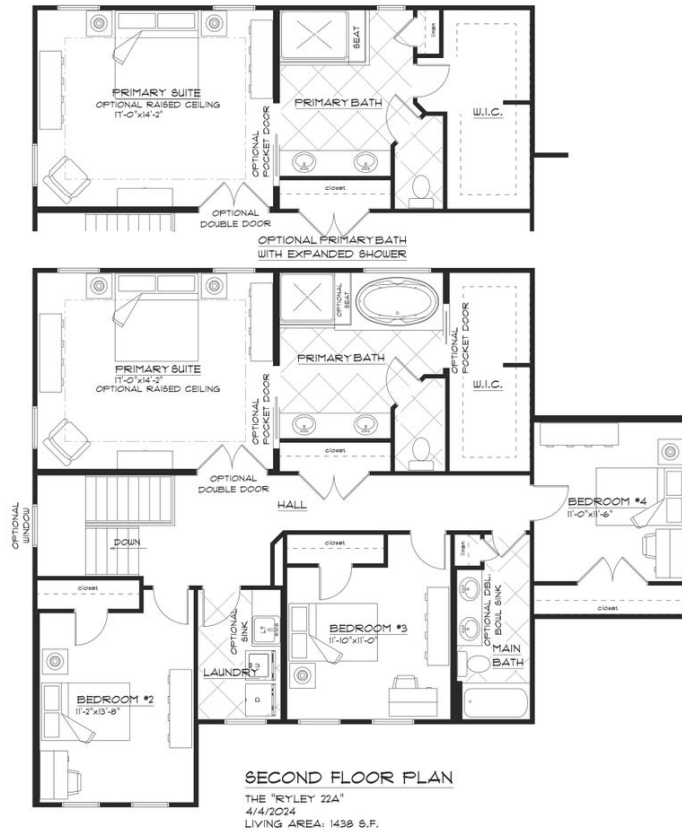
2/22/2023

LIVING AREA: 1438 S.F.

- SECOND FLOOR OPTIONS -

The Ryley

at Pleasant Creek Community



- SECOND FLOOR- LOFT -

The Ryley

at Pleasant Creek Community



CONTACT US: CALL/TEXT (716) 202-0839

FORBESCAPRETTO.COM



ForbesCapretto Homes continuously improves home designs and reserves the right to modify home features and specifications without notice or obligation. Square footage and measurements are approximate. Renderings of elevations are artist's concepts. Floor plans vary per elevation. ForbesCapretto Homes standard features vary by home design and location, please refer to the included features sheet for the community to define specifications. This brochure is for illustrative purposes and not part of the legal contract. Please ask Sales Associate for complete details. © 2024 ForbesCapretto Homes.

- SECOND FLOOR- LOFT- OPTIONS -

The Ryley

at Pleasant Creek Community

