



- FLOORPLAN -

## *The Stratford*

*at Pleasant Creek Community*

**\$426,500**

BASE PRICE

**3**

BEDROOMS

**2.5**

BATHROOMS

**2**

CAR GARAGE

**2,031 - 2,500**

SQ.FT.

**CONTACT US: (716) 202-0839**

**FORBESCAPRETTO.COM**

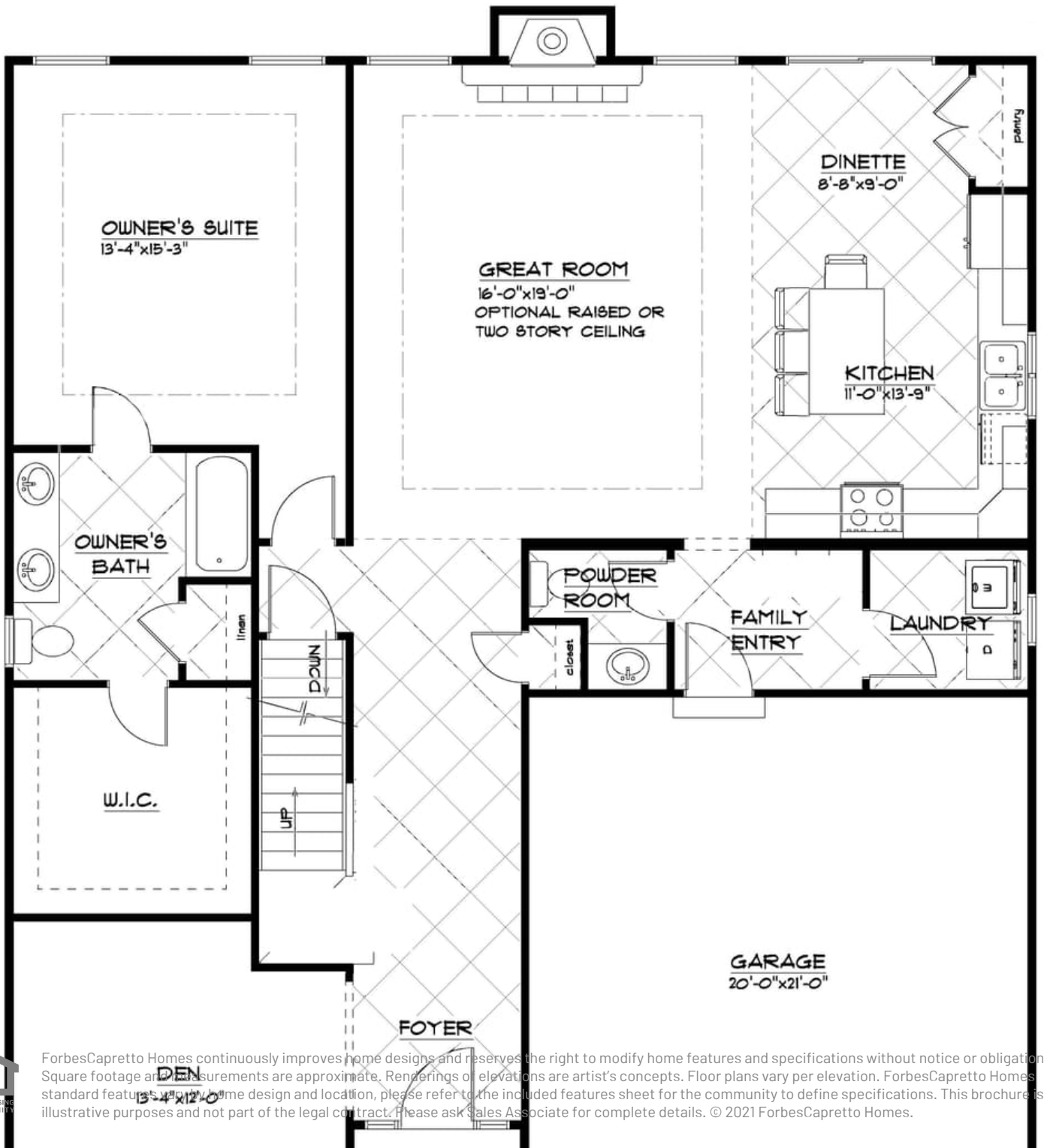


ForbesCapretto Homes continuously improves home designs and reserves the right to modify home features and specifications without notice or obligation. Square footage and measurements are approximate. Renderings of elevations are artist's concepts. Floor plans vary per elevation. ForbesCapretto Homes standard features vary by home design and location, please refer to the included features sheet for the community to define specifications. This brochure is for illustrative purposes and not part of the legal contract. Please ask Sales Associate for complete details. © 2021 ForbesCapretto Homes.

- FIRST FLOOR -

# The Stratford

at Pleasant Creek Community



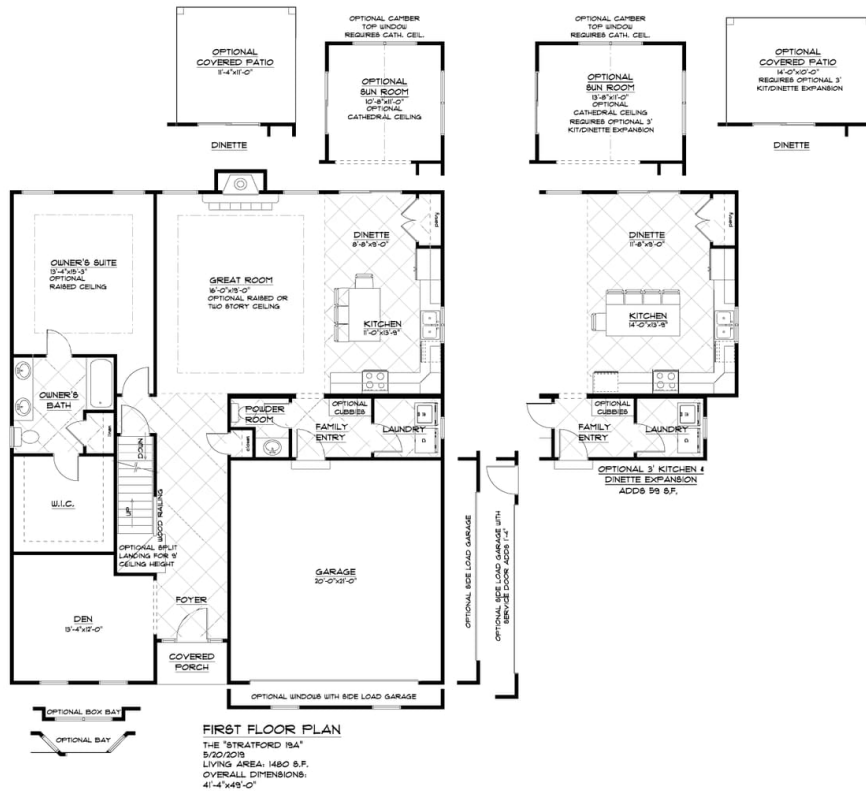
ForbesCapretto Homes continuously improves home designs and reserves the right to modify home features and specifications without notice or obligation. Square footage and measurements are approximate. Renderings or elevations are artist's concepts. Floor plans vary per elevation. ForbesCapretto Homes standard features vary by home design and location, please refer to the included features sheet for the community to define specifications. This brochure is for illustrative purposes and not part of the legal contract. Please ask Sales Associate for complete details. © 2021 ForbesCapretto Homes.



- FIRST FLOOR OPTIONS -

# The Stratford

at Pleasant Creek Community



CONTACT US: (716) 202-0839

FORBESCAPRETTO.COM

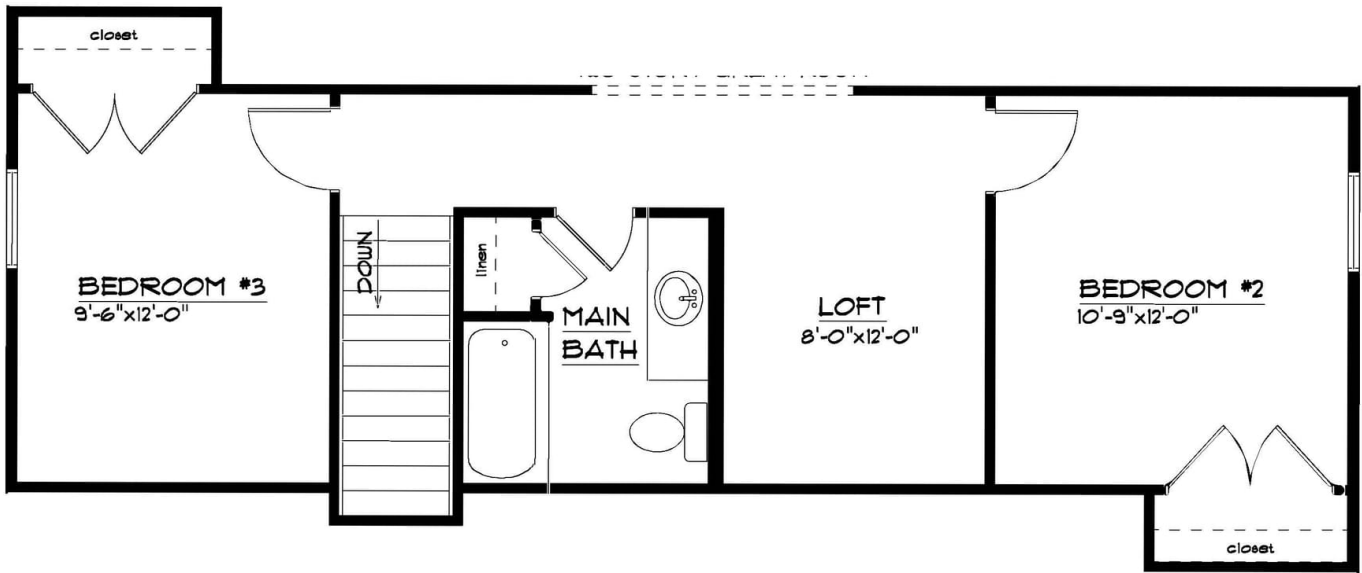


ForbesCapretto Homes continuously improves home designs and reserves the right to modify home features and specifications without notice or obligation. Square footage and measurements are approximate. Renderings of elevations are artist's concepts. Floor plans vary per elevation. ForbesCapretto Homes standard features vary by home design and location, please refer to the included features sheet for the community to define specifications. This brochure is for illustrative purposes and not part of the legal contract. Please ask Sales Associate for complete details. © 2021 ForbesCapretto Homes.

- SECOND FLOOR -

## The Stratford

at Pleasant Creek Community



### SECOND FLOOR PLAN

THE "STRATFORD 19A"  
Monday, May 20, 2019  
LIVING AREA: 551 S.F.

CONTACT US: (716) 202-0839

FORBESCAPRETTO.COM



- SECOND FLOOR OPTIONS -

# The Stratford

at Pleasant Creek Community



**SECOND FLOOR PLAN**  
 THE "STRATFORD 18A"  
 Monday, May 20, 2019  
 LIVING AREA: 861 S.F.



**OPTIONAL SECOND FLOOR PLAN WITHOUT LOFT**  
 THE "STRATFORD 18A"  
 5/20/2019  
 LIVING AREA: 836 S.F.

CONTACT US: (716) 202-0839

FORBESCAPRETTO.COM



ForbesCapretto Homes continuously improves home designs and reserves the right to modify home features and specifications without notice or obligation. Square footage and measurements are approximate. Renderings of elevations are artist's concepts. Floor plans vary per elevation. ForbesCapretto Homes standard features vary by home design and location, please refer to the included features sheet for the community to define specifications. This brochure is for illustrative purposes and not part of the legal contract. Please ask Sales Associate for complete details. © 2021 ForbesCapretto Homes.