



Priced From

**\$536,500**

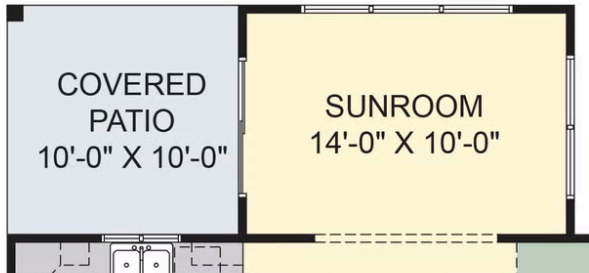
5 Elevations Available

-  2,112+ Sq. Ft.
-  4 Bedrooms
-  2.5 Bathrooms
-  2 Car Garage

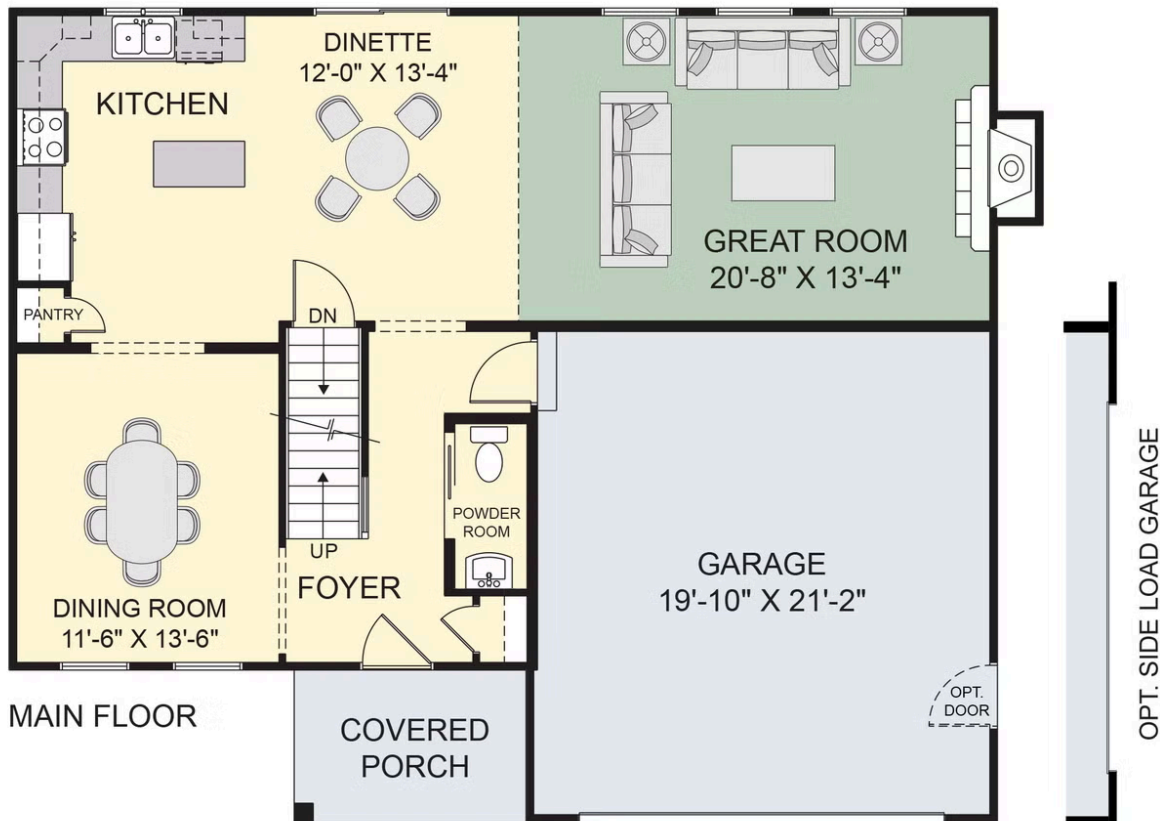
The Bailey floor plan offers a convenient layout with a thoughtful design, as well as a charming exterior. Enjoy an open-concept living arrangement, perfect for entertaining guests, with the kitchen, dining area, and great room all open and connected. Your new kitchen offers plenty of counter space and an undermount sink, along with a kitchen island for additional meal prep space. The first floor includes an additional flex room that could be used as a dining room or study. On the second floor, enjoy your spacious primary suite, which includes a generous walk-in closet and a private bath, complete with a convenient double-bowl vanity. This floor plan comes equipped with a second-floor laundry center, eliminating the need to carry laundry up and down the stairs. Three additional bedrooms and a full hall bath complete the upstairs layout of the Bailey.

\* Photos may depict some features no longer available.

## First Floor

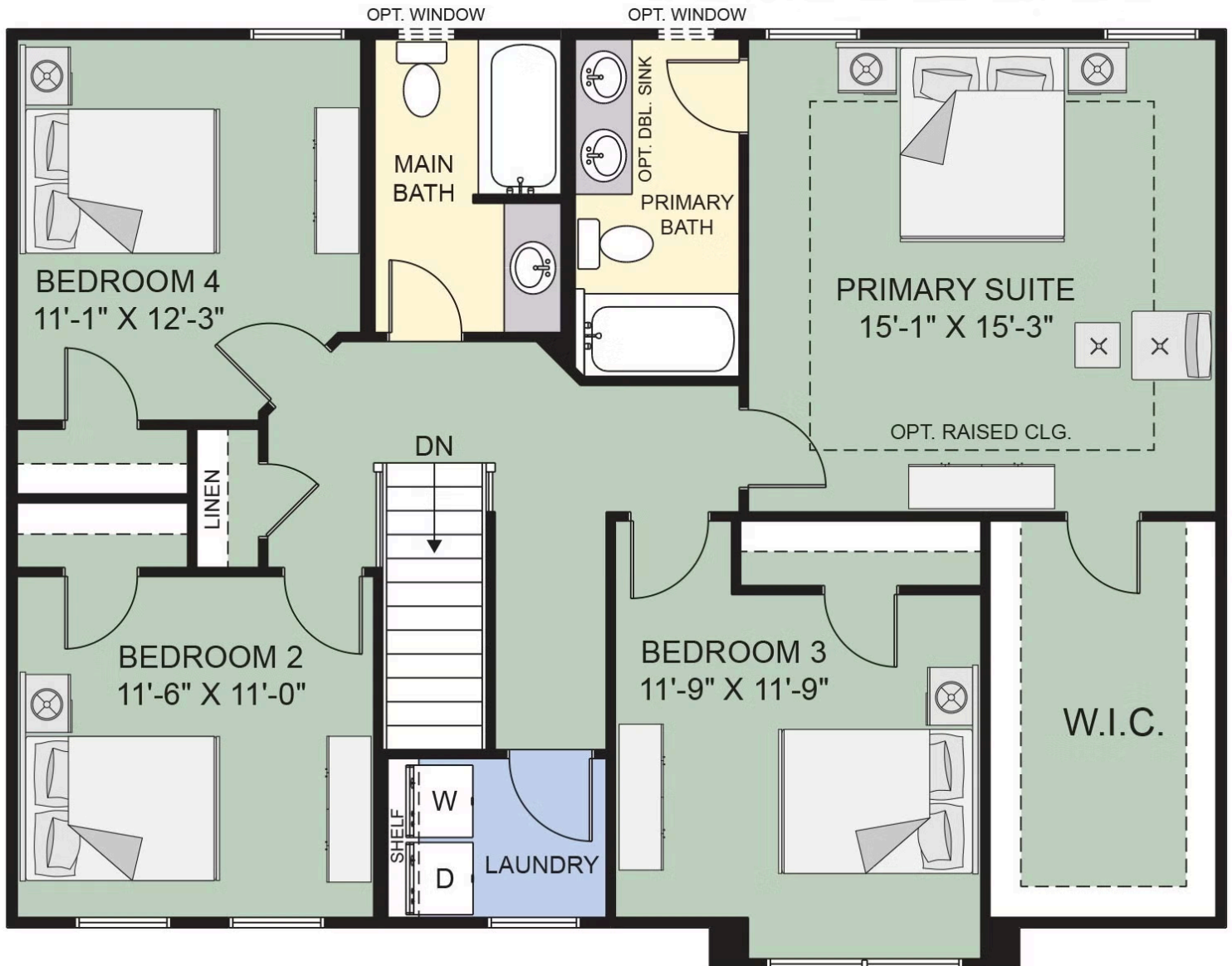


OPTIONAL SUNROOM WITH  
OPTIONAL COVERED PATIO



Bailey 24A- 6/24

## Second Floor



## UPPER FLOOR

Bailey 24A- 6/24