







Priced From
\$719,900

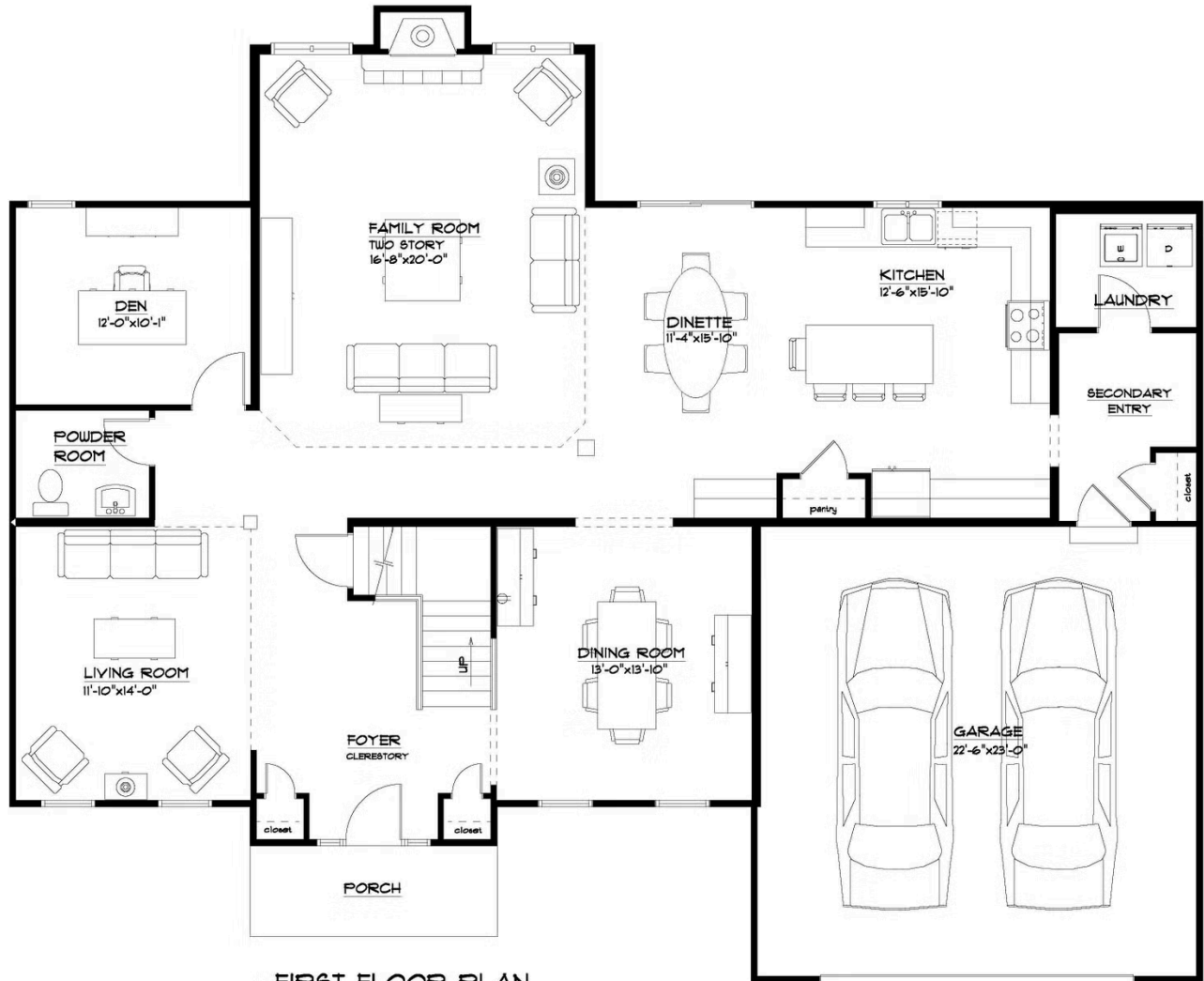
5 Elevations Available

-  3,267+ Sq. Ft.
-  4 - 5 Bedrooms
-  2.5 - 4.5 Bathrooms
-  2 Car Garage

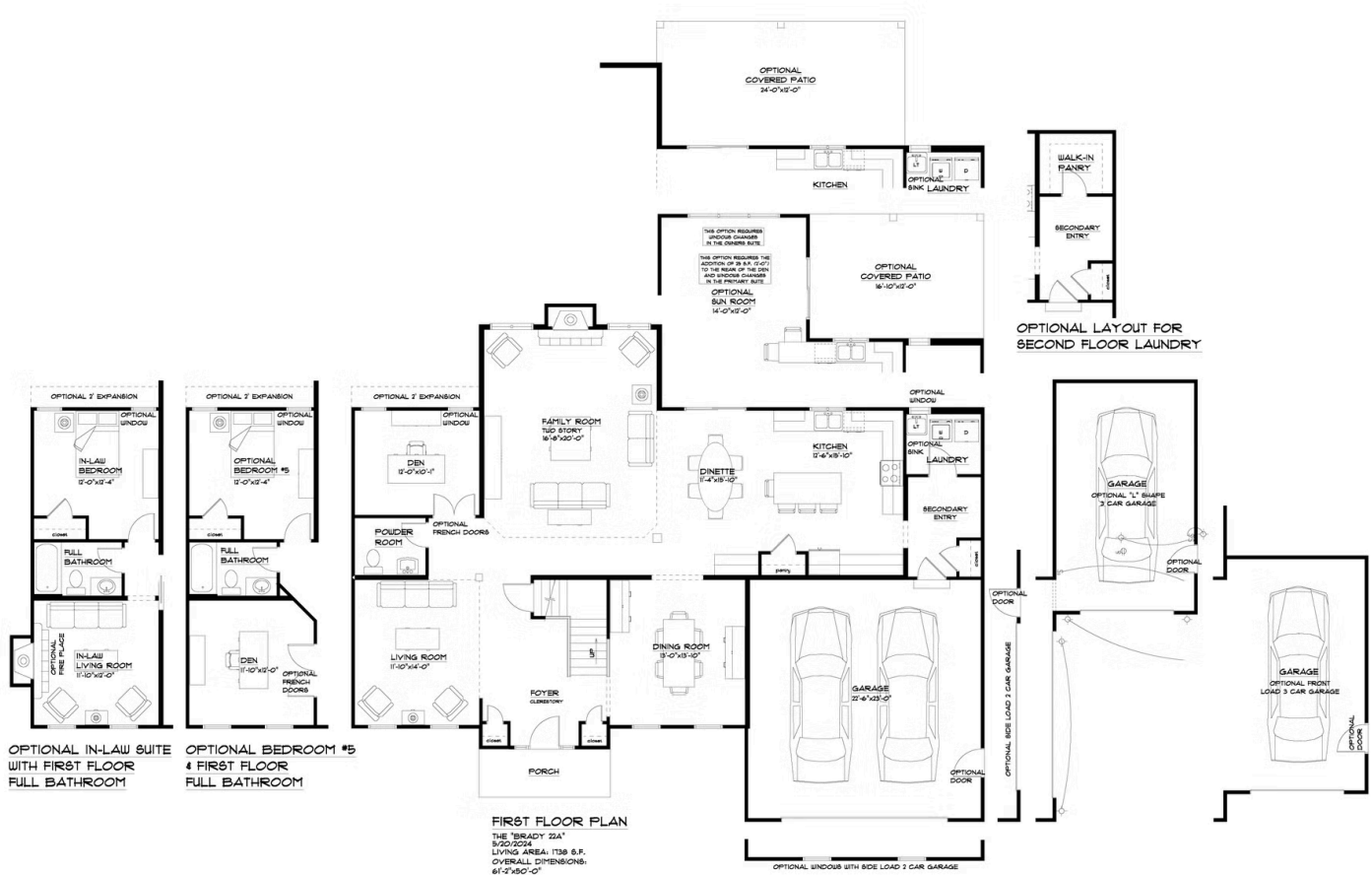
Timeless and classic accurately describes the charm that this home exudes. A sense of warmth and elegance is provided as you enter this home. Your attention is grabbed by the beautiful L-shaped staircase in the two story foyer. Formal Living and Dining rooms at the front of the house provide for easy entertaining while the rest of the first level is filled with everyday living space. Your gourmet kitchen is spacious enough for two chefs and features a generous amount of quartz counter space. The primary suite provides ample space and access to an adjoining bath. Completing the Primary suite is a large walk-in closet. Three additional bedrooms, two full bathrooms and a huge laundry room complete the second level. Total sq ft includes clerestory.

* Photos may depict some features no longer available.

First Floor



First Floor Options



Second Floor



SECOND FLOOR PLAN

THE "BRADY 22A"

5/22/2023

LIVING AREA: 1529 S.F.

CLERESTORY 453 S.F.

TOTAL AREA 1982 S.F.

Second Floor Options