



- FLOORPLAN -

## The Bailey

at Hidden Meadow Community

**\$433,900**

BASE PRICE

**4**

BEDROOMS

**2.5**

BATHROOMS

**2**

CAR GARAGE

**2,054 - 2,400**

SQ.FT.

The Bailey floor plan offers a convenient layout with a thoughtful design, as well as a charming exterior. Enjoy an open-concept living arrangement, perfect for entertaining guests, with the kitchen, dining area, and great room all open and connected. Your new kitchen offers plenty of counter space and an undermount sink, along with a kitchen island for additional meal prep space. The first floor includes an additional flex room that could be used as a dining room or study. On the second floor, enjoy your spacious owner's suite, which includes a generous walk-in closet and a private owner's bath, complete with a convenient double-bowl vanity. This floor plan comes equipped with a second-floor laundry center, eliminating the need to carry laundry up and down the stairs. Three additional bedrooms and a full hall bath complete the upstairs layout of the Bailey.

**CONTACT US: (716) 202-0839**

**FORBESCAPRETTO.COM**

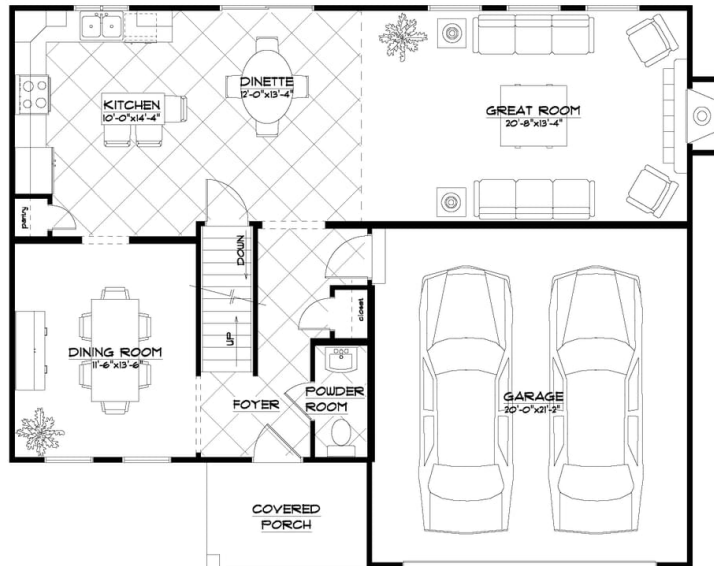


ForbesCapretto Homes continuously improves home designs and reserves the right to modify home features and specifications without notice or obligation. Square footage and measurements are approximate. Renderings of elevations are artist's concepts. Floor plans vary per elevation. ForbesCapretto Homes standard features vary by home design and location, please refer to the included features sheet for the community to define specifications. This brochure is for illustrative purposes and not part of the legal contract. Please ask Sales Associate for complete details. © 2021 ForbesCapretto Homes.

- FIRST FLOOR -

# The Bailey

at Hidden Meadow Community



### FIRST FLOOR PLAN

THE "BAILEY 205"  
 4/21/2020  
 LIVING AREA: 955 S.F.  
 OVERALL DIMENSIONS:  
 43'-4" x 35'-8"

CONTACT US: (716) 202-0839

FORBESCAPRETTO.COM

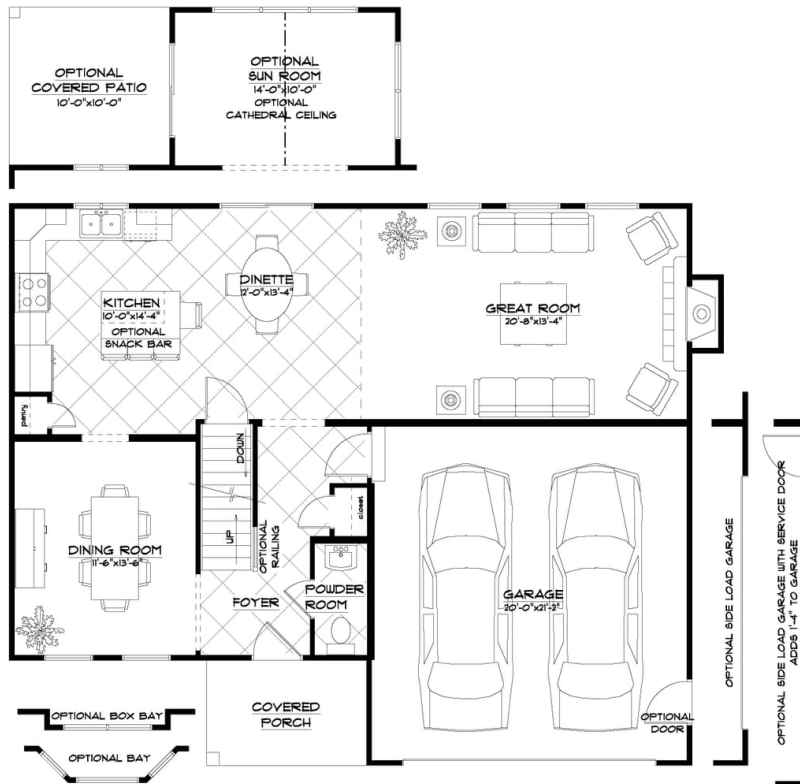


ForbesCapretto Homes continuously improves home designs and reserves the right to modify home features and specifications without notice or obligation. Square footage and measurements are approximate. Renderings of elevations are artist's concepts. Floor plans vary per elevation. ForbesCapretto Homes standard features vary by home design and location, please refer to the included features sheet for the community to define specifications. This brochure is for illustrative purposes and not part of the legal contract. Please ask Sales Associate for complete details. © 2021 ForbesCapretto Homes.

- FIRST FLOOR OPTIONS -

# The Bailey

at Hidden Meadow Community



**FIRST FLOOR PLAN**

THE "BAILEY 20B"  
 4/7/2020  
 LIVING AREA: 955 S.F.  
 OVERALL DIMENSIONS:  
 43'-4" x 35'-8"

CONTACT US: (716) 202-0839

FORBESCAPRETTO.COM



ForbesCapretto Homes continuously improves home designs and reserves the right to modify home features and specifications without notice or obligation. Square footage and measurements are approximate. Renderings of elevations are artist's concepts. Floor plans vary per elevation. ForbesCapretto Homes standard features vary by home design and location, please refer to the included features sheet for the community to define specifications. This brochure is for illustrative purposes and not part of the legal contract. Please ask Sales Associate for complete details. © 2021 ForbesCapretto Homes.

- SECOND FLOOR -

## The Bailey

at Hidden Meadow Community



### SECOND FLOOR PLAN

THE "BAILEY 20B"  
4/21/2020  
LIVING AREA: 1096 S.F.

CONTACT US: (716) 202-0839

FORBESCAPRETTO.COM

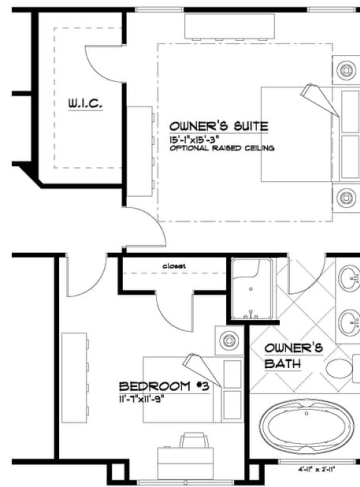
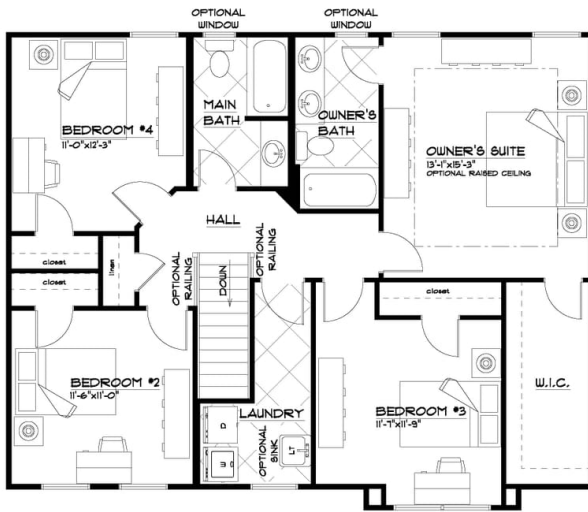


ForbesCapretto Homes continuously improves home designs and reserves the right to modify home features and specifications without notice or obligation. Square footage and measurements are approximate. Renderings of elevations are artist's concepts. Floor plans vary per elevation. ForbesCapretto Homes standard features vary by home design and location, please refer to the included features sheet for the community to define specifications. This brochure is for illustrative purposes and not part of the legal contract. Please ask Sales Associate for complete details. © 2021 ForbesCapretto Homes.

- SECOND FLOOR OPTIONS -

# The Bailey

at Hidden Meadow Community



OPTIONAL SPA BATH  
ADD 58 S.F.

**SECOND FLOOR PLAN**

THE "BAILEY 20B"  
4/21/2020  
LIVING AREA: 1096 S.F.

CONTACT US: (716) 202-0839

FORBESCAPRETTO.COM



ForbesCapretto Homes continuously improves home designs and reserves the right to modify home features and specifications without notice or obligation. Square footage and measurements are approximate. Renderings of elevations are artist's concepts. Floor plans vary per elevation. ForbesCapretto Homes standard features vary by home design and location, please refer to the included features sheet for the community to define specifications. This brochure is for illustrative purposes and not part of the legal contract. Please ask Sales Associate for complete details. © 2021 ForbesCapretto Homes.