



Priced From  
**\$922,500**

6 Elevations Available

-  3,509+ Sq. Ft.
-  5 Bedrooms
-  4 Bathrooms
-  3 Car Garage

Forbes Capretto Homes' new floor plan, The Allen, is a tribute to the qualities that create successful home design. The Allen uses strategy and creativity to bring together the elements in the right places, including 5 bedrooms, 4 baths, 2-car garage, and outstanding storage.

The covered front porch, gables, and side-loaded garage enhance the curb appeal of The Allen. Then, depending on your selections, you can transform this versatile home to Craftsman, Modern Farmhouse, or Traditional architecture. You make the calls with every detail, creating a home that's uniquely your own.

The Allen's 3,509 square feet of living space blends grandeur with convenience. Step into the clerestory foyer, filled with natural light and open spaces for a warm welcome. On each side of the foyer, The Allen presents a den that could become an office, library, fitness room, or a 6th bedroom. Opposite the den, a formal dining room connects to the kitchen by a fully appointed butler's pantry.

Beyond the elegant staircase, step into the main living area. The great room's vaulted ceiling expands the spaciousness beyond the large room. The dining area leads to the gourmet kitchen—designed for functionality and style. In addition to the oversized center island, ample cabinetry and workspaces, The Allen's kitchen includes an adjacent walk-in pantry that's located next to a massive walk-in closet—large enough to become a pocket office.

What else do you need on the main level of your dream house? How about a guest suite? The vestibule entry off the great room adds to the privacy of the large suite. Ideal for guests or multigenerational living, this feature scores points with today's homeowners.

The remaining 4 bedrooms and laundry are located on the second floor. Retreat to the primary suite, which

All square footage is approximate. Renderings are artist's conceptions and may vary slightly from the actual home. Homes may be built in reverse of plans shown, depending on site conditions. Minor architectural changes may be made occasionally at the option of the builder. Please contact your Sales Consultant for details.

# First Floor

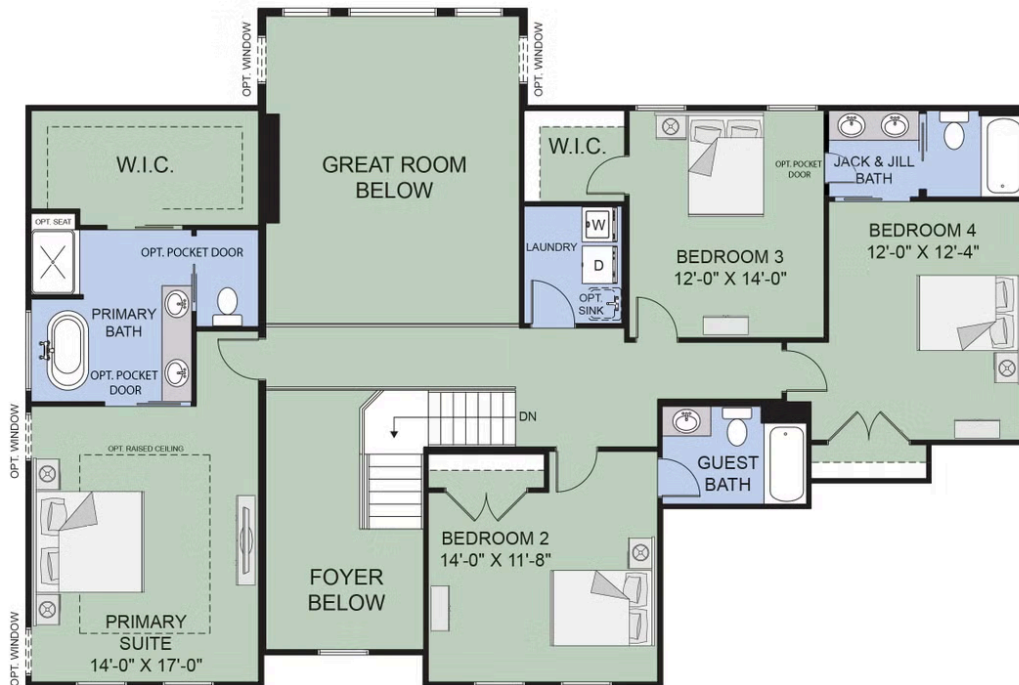


All square footage is approximate. Renderings are artist's conceptions and may vary slightly from the actual home. Homes may be built in reverse of plans shown, depending on site conditions. Minor architectural changes may be made occasionally at the option of the builder. Please contact your Sales Consultant for details.

## Second Floor



OPTIONAL FLEX CLOSET



UPPER FLOOR

All square footage is approximate. Renderings are artist's conceptions and may vary slightly from the actual home. Homes may be built in reverse of plans shown, depending on site conditions. Minor architectural changes may be made occasionally at the option of the builder. Please contact your Sales Consultant for details.