



Priced From  
**\$1,149,900**

1 Elevations Available

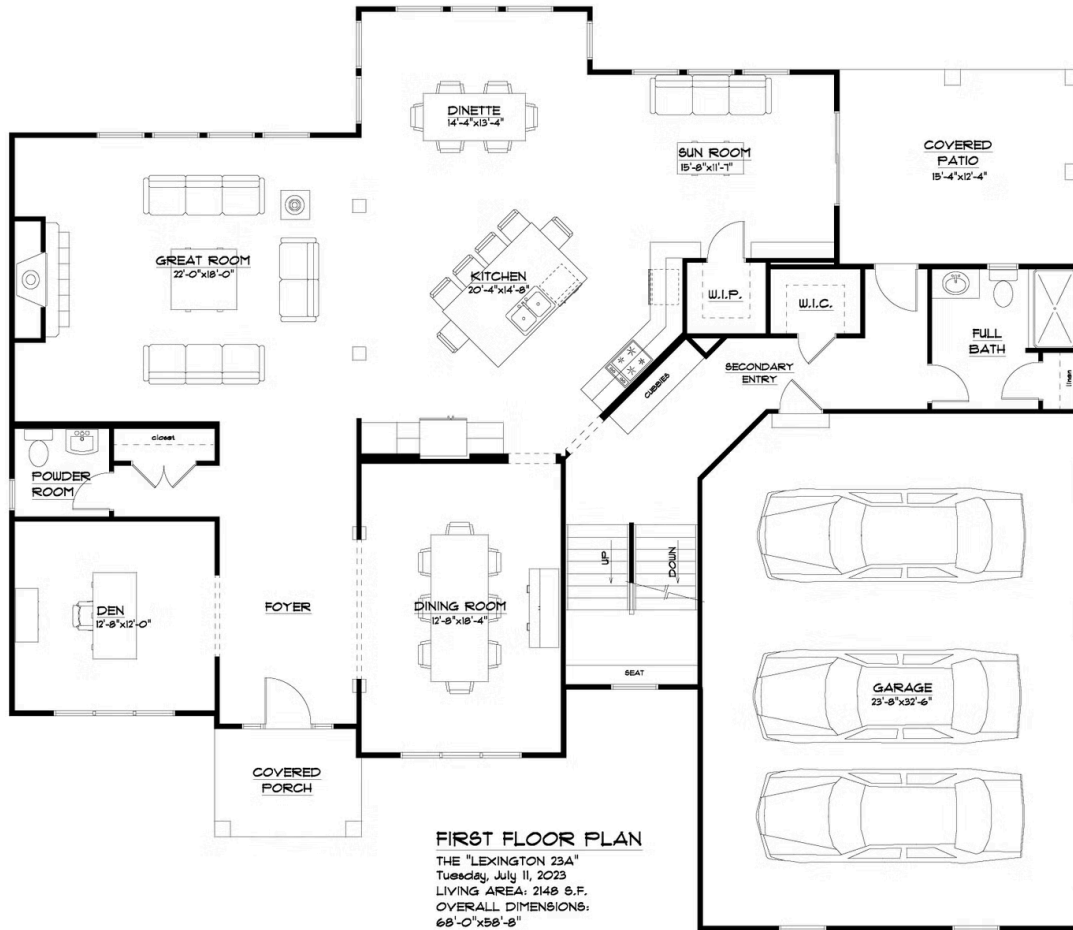
-  4,202+ Sq. Ft.
-  4 Bedrooms
-  4.5 Bathrooms
-  3 Car Garage

As one of our grandest homes, The Lexington demonstrates Forbes Capretto Homes' creativity and keen understanding of the elements of design on a larger scale. We don't simply add square footage to rooms, but address the flow of the floor plan, the relationship of one room to the next, and the ways that this home embraces a comfortable lifestyle. The first floor presents 2,044 square feet, mostly comprised of wide open spaces that enable you to use your creativity to transform every area to meet your needs. The great room is large enough to divide it into purposeful nooks. The expansive kitchen features a large center island with a breakfast bar that comfortably seats several people, perfect for casual snacks and meals. The adjacent dining area provides plenty of space for daily meals, and the formal dining room—connected to the kitchen via a butler's pantry—allows you to accommodate a larger gathering. The first floor also of a large family entry, and a private study off the foyer. The three-car garage is side-loaded and provides a larger look to your home's façade. The second story of The Lexington provides an owner's suite that reflects the same grand scale as the rest of the home. The owners suite features a sitting area by the large window that overlooks your back yard. The owner's bathroom continues with a spa tub, oversized shower with a seat, dual vanities, private water closet, and access to a walk-in closet that provides enough space for four seasons of your wardrobe. The three other bedrooms each include a walk-in closet. Two of these rooms share a Jack-and-Jill full bath. The fourth, with its own full bath, is ideal for a guest room. When you want as much sensible design as square footage, take a closer look at The Lexington.

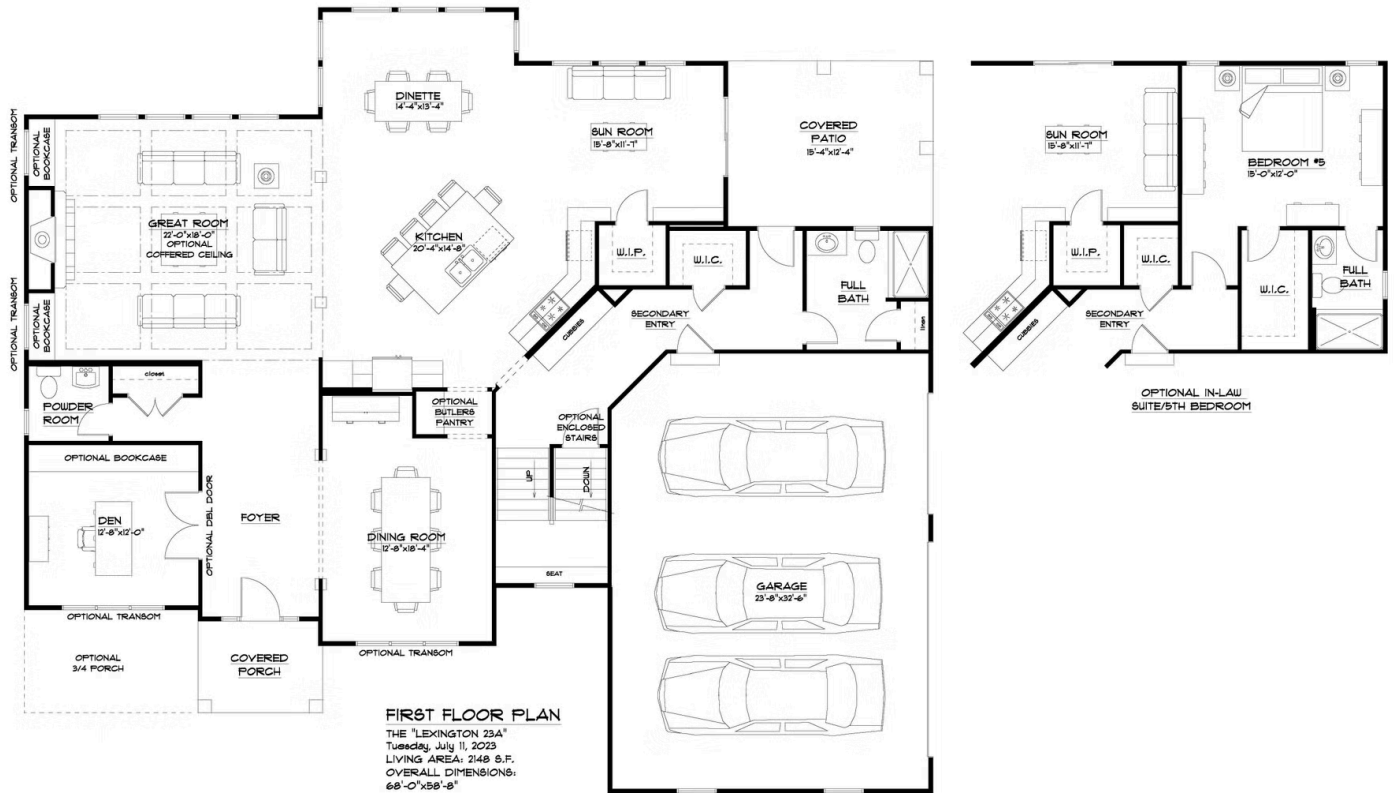
\* Photos may depict some features no longer available.

All square footage is approximate. Renderings are artist's conceptions and may vary slightly from the actual home. Homes may be built in reverse of plans shown, depending on site conditions. Minor architectural changes may be made occasionally at the option of the builder. Please contact your Sales Consultant for details.

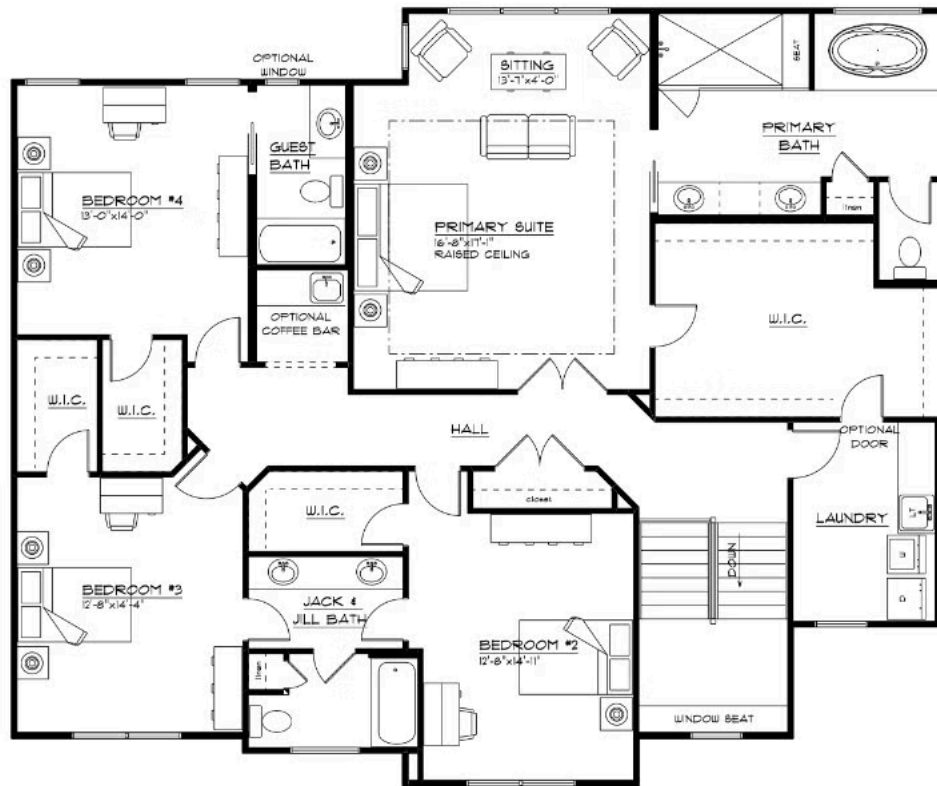
## First Floor



## First Floor Options



## Second Floor



### SECOND FLOOR PLAN

THE "LEXINGTON 23A"  
Thursday, March 23, 2023  
LIVING AREA: 2058 S.F.