





## The Cavanaugh

Wheatfield Crossing



Priced From  
**\$585,900**

4 Elevations Available

-  1,934+ Sq. Ft.
-  3 Bedrooms
-  2.5 Bathrooms
-  2.5 Car Garage

Does your home fit your lifestyle? The Cavanaugh was designed for right-sizing. From starting out to empty-nesting, this 1,934-square-foot floor plan smartly brings together the spaces you need and want, with the extra details that have made Forbes Capretto Homes one of the leading home builders in Western New York.

Start with the home's curb appeal. You choose the details to distinguish The Cavanaugh as your own. The included covered porch enhances the exterior, while also giving you a space to decorate from season to season.

With the convenient entrance from the garage just beyond the adjacent powder room, you'll have a welcoming, organized drop zone! And with the laundry room by the drop zone (and across from the kitchen), you can multi-task with ease.

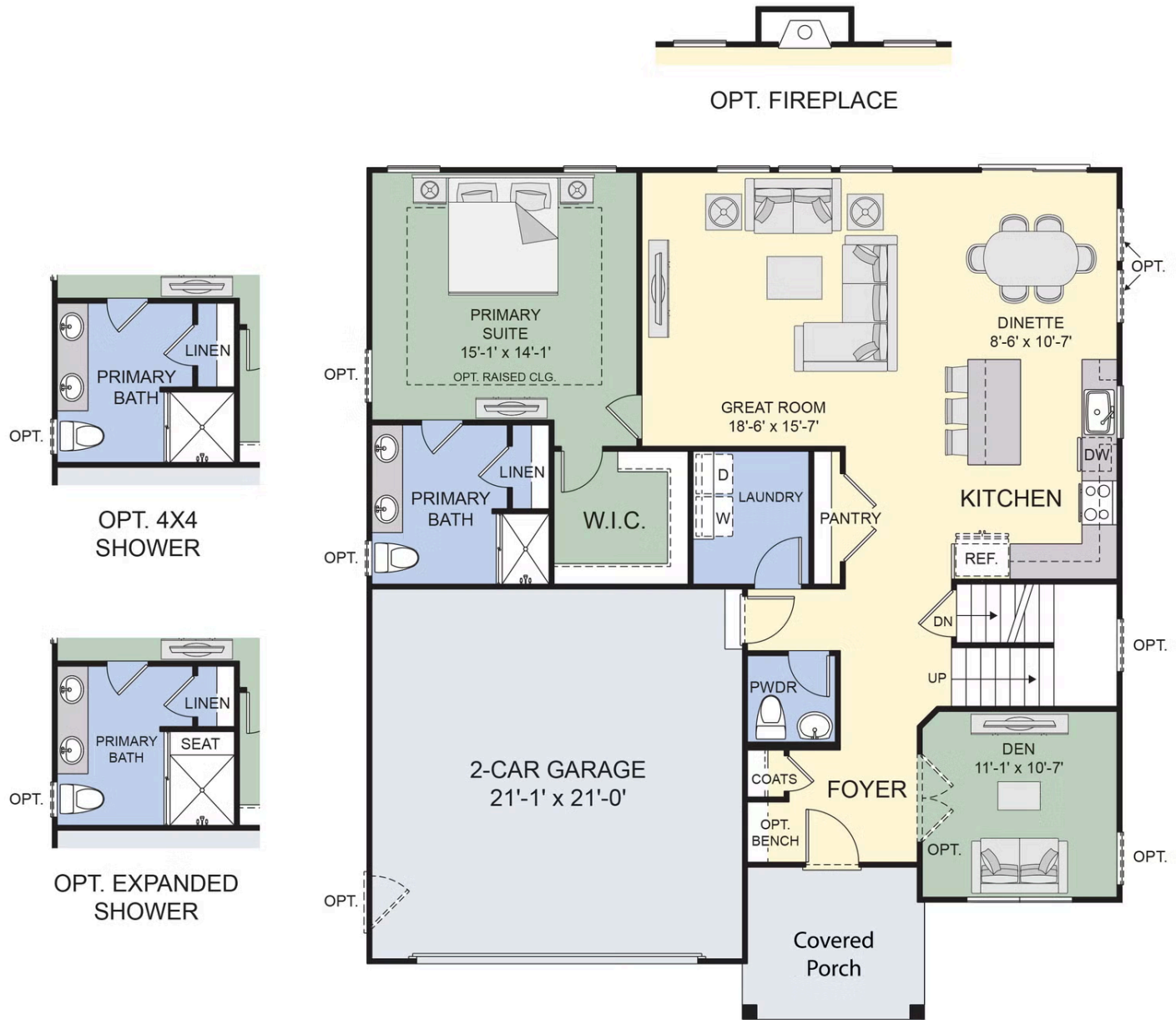
Forbes Capretto Homes includes a bonus space off the foyer. The flex room has a wide entrance that can be outfitted with double doors as an option for extra privacy. Perfect for a home office, den, formal dining room, or anything other function you want!

From there, The Cavanaugh floor plan opens to the main living area, where the kitchen, great room, and dining area seamlessly come together—without walls that divide the activity. The kitchen is a highlight of this floor plan. You'll appreciate the value of the generously sized center island and pantry.

Next, consider the advantages of having a first-floor primary suite, your truly private retreat. Nestled in the back corner of The Cavanaugh, the suite is close enough to the main living area to step out to the back yard, grab a late night snack or early coffee. And the primary bath can be personalized to include optional seats or an expanded size.

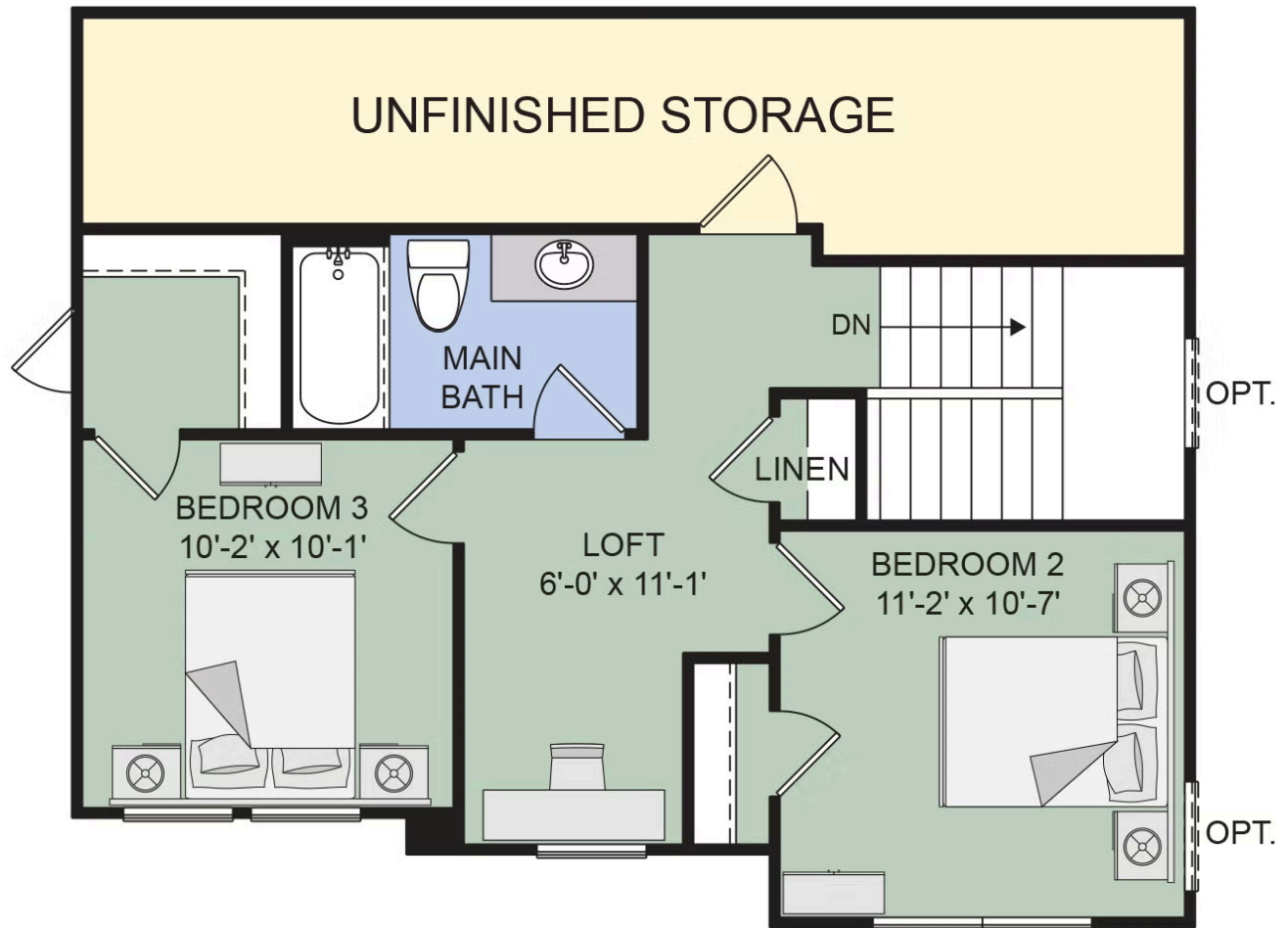
1st Floor Primary: 2 more bedrooms are connected by a large loft that is filled with light from the window. We envisioned

All square footage is approximate. Renderings are artist's conceptions and may vary slightly from the actual home. Homes may be built in reverse of plans shown, depending on site conditions. Minor architectural changes may be made occasionally at the option of the builder. Please contact your Sales Consultant for details.



Cavanaugh 23A, 4/2024 MAIN FLOOR

## Second Floor



## Cavanaugh 23A, 4/2024 UPPER FLOOR