



- FLOORPLAN -

The Crestwood

at Gesel Woods Community

\$730,000 BASE PRICE	4 BEDROOMS	2.5 BATHROOMS	2 CAR GARAGE	2,962 - 3,243 SQ.FT.
--------------------------------	----------------------	-------------------------	------------------------	--------------------------------

A home that is intelligently designed gives you something essential: choices.

The Crestwood is a versatile home design that starts with exquisite architecture. From there, you select the details, one by one, like siding. Do you appreciate the classic lines of traditional design or would you prefer something in Craftsman? Choose the style of windows and combinations of siding. Create the front entrance you like, with or without a porch.

Then take your creativity inside this 4-bedroom home that blends nearly 3,000 square feet in 2 levels. The open concept on the main level gives you space to cook, dine, relax, play, and entertain—all at the same time, if you like. Large windows stream natural light into your home, filling it with the “sunshine vitamin”. Just beyond the open living area, a large formal dining room extends your entertaining possibilities. The owner’s choice room off the foyer provides another opportunity: home office, fitness room, playroom, or something else?

On the second level, the 4 bedrooms have been situated so that the entrances are spread apart to offer more privacy, an essential feature that can be overlooked in some floor plans. Your Primary Suite, which includes a dressing area, expansive Walk-In Closet, and a private bath retreat. The 3 additional bedrooms are also accompanied by a full bath.

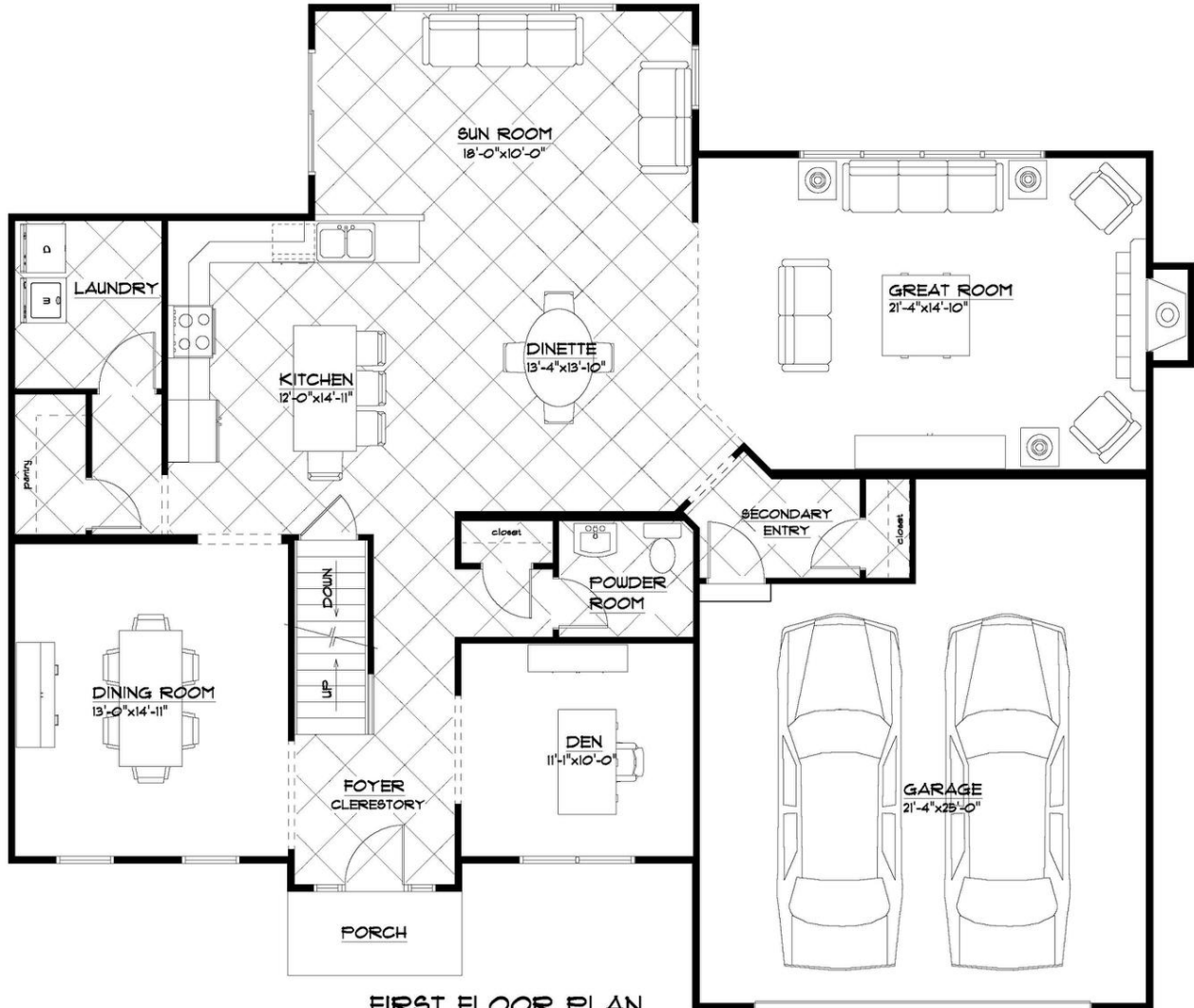
This exclusive home design gives you so many choices for your life.

* Photos may depict some features no longer available.

- FIRST FLOOR -

The Crestwood

at Gesel Woods Community



FIRST FLOOR PLAN

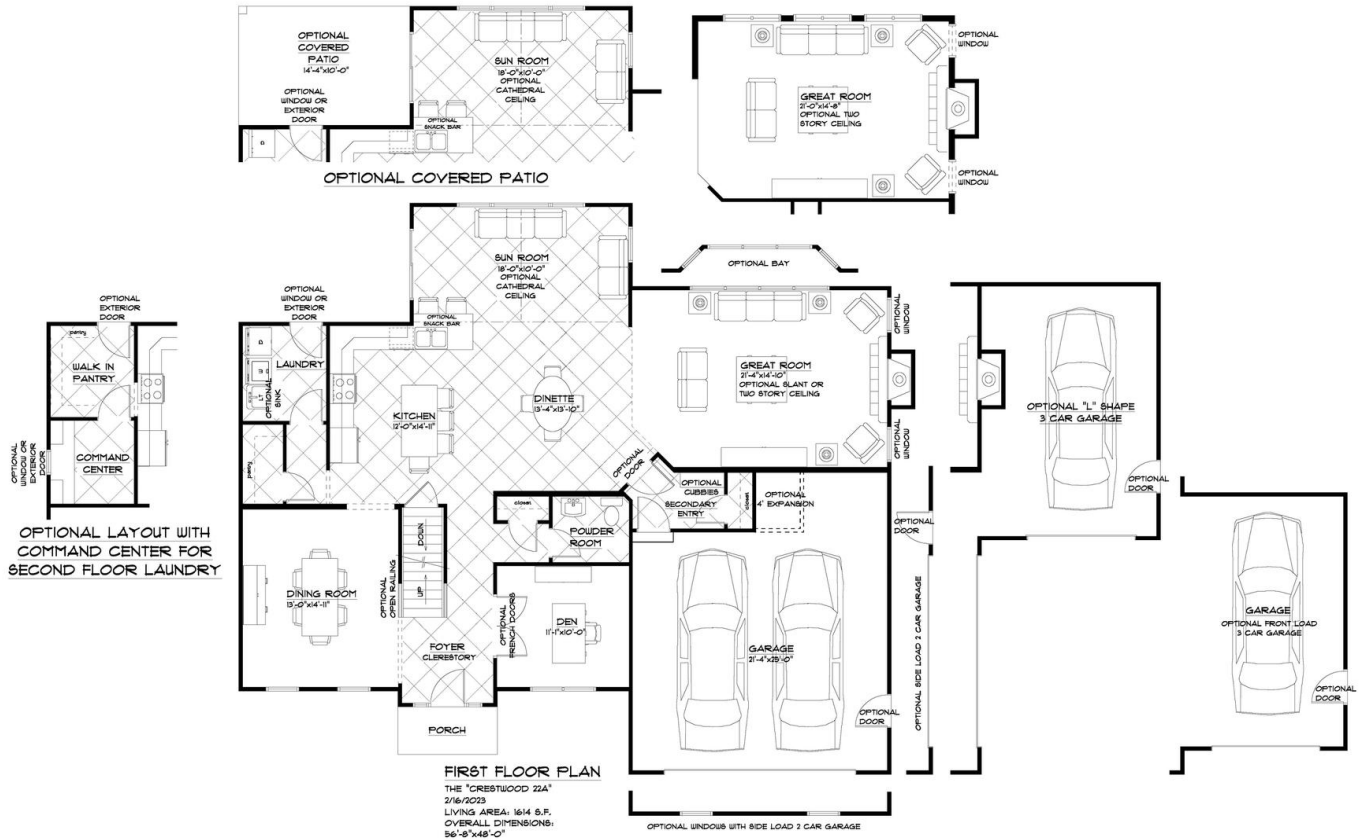
THE "CRESTWOOD 22A"
2/16/2023
LIVING AREA: 1614 S.F.
OVERALL DIMENSIONS:
56'-8" x 48'-0"



- FIRST FLOOR OPTIONS -

The Crestwood

at Gesel Woods Community



- SECOND FLOOR -

The Crestwood

at Gesel Woods Community



SECOND FLOOR PLAN

THE "CRESTWOOD 22A"

2/16/2023

LIVING AREA: 1270 S.F.

CLERESTORY 78 S.F.

TOTAL AREA 1348 S.F.

- SECOND FLOOR OPTIONS -

The Crestwood

at Gesel Woods Community

