



Priced From  
**\$539,900**

5 Elevations Available

-  1,550+ Sq. Ft.
-  2 - 3 Bedrooms
-  2 - 3 Bathrooms
-  2 Car Garage

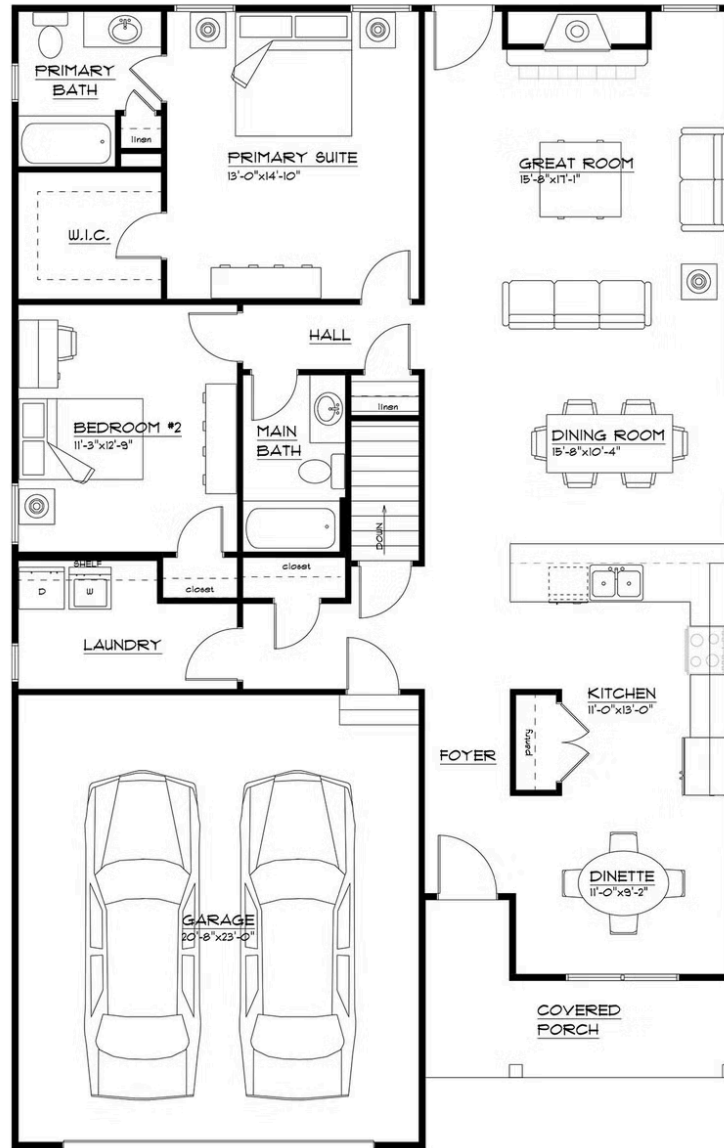
Welcome to **The Angelina**, a thoughtfully designed home that combines modern convenience with timeless style. Starting at **1,550 square feet**, this **two-bedroom, two-bath** layout offers a spacious and open floor plan, ideal for comfortable living and effortless entertaining.

Step inside to find the **open kitchen and dinette**—perfect for gathering, seamlessly flowing into the Dining room and **bright and airy great room**, complete with a cozy **gas fireplace**. A **first-floor laundry room** adds everyday convenience, while the **attached two-car garage** provides ample storage and easy access.

For those seeking additional space, The Angelina offers flexible expansion options. Personalize your home with an **optional second story**, featuring either a **loft and third bedroom** or a **loft, third bedroom, and third full bath**, creating even more room to suit your needs. Enhance your living space further with a **sunroom or covered patio**, perfect for relaxing and enjoying the outdoors.

Whether you're looking for a stylish, single-level home or additional space for family and guests, The Angelina adapts beautifully to your lifestyle.

**Discover the possibilities—make The Angelina your own!**

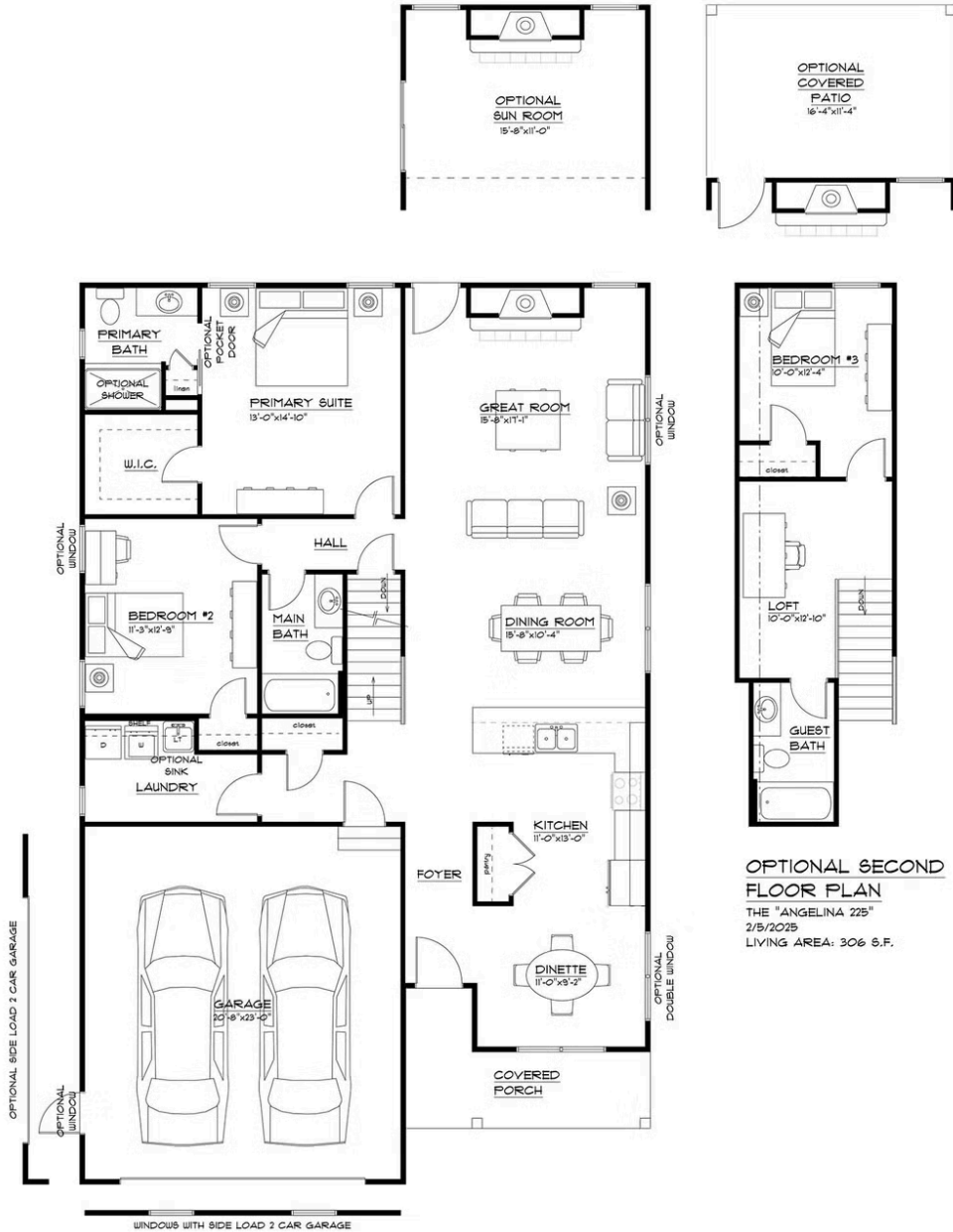


**FLOOR PLAN**

THE "ANGELINA 225"  
2/3/2025  
LIVING AREA: 1550 S.F.  
OVERALL DIMENSIONS:  
31'-4" x 59'-0"

Ranch  
**The Angelina**  
Sites at Harding - Now Selling

NEW HOME SPECIALIST  
Hannah  
Call Us @ 716-770-6040  
sales@forbeshomes.com



**FIRST FLOOR PLAN**  
THE "ANGELINA 225"  
2/5/2025  
LIVING AREA: 1550 S.F.  
OVERALL DIMENSIONS:  
31'-4" x 59'-0"

All square footage is approximate. Renderings are artist's conceptions and may vary slightly from the actual home. Homes may be built in reverse of plans shown, depending on site conditions. Minor architectural changes may be made occasionally at the option of the builder. Please contact your Sales Consultant for details.