



Priced From  
**\$841,900**

3 Elevations Available

-  2,982+ Sq. Ft.
-  4 Bedrooms
-  2.5 Bathrooms
-  2 Car Garage

A home that is intelligently designed gives you something essential: choices.

The Crestwood is a versatile home design that starts with exquisite architecture. From there, you select the details, one by one, like siding. Do you appreciate the classic lines of traditional design or would you prefer something in Craftsman? Choose the style of windows and combinations of siding. Create the front entrance you like, with or without a porch.

Then take your creativity inside this 4-bedroom home that blends nearly 3,000 square feet in 2 levels. The open concept on the main level gives you space to cook, dine, relax, play, and entertain—all at the same time, if you like. Large windows stream natural light into your home, filling it with the “sunshine vitamin”. Just beyond the open living area, a large formal dining room extends your entertaining possibilities. The owner’s choice room off the foyer provides another opportunity: home office, fitness room, playroom, or something else?

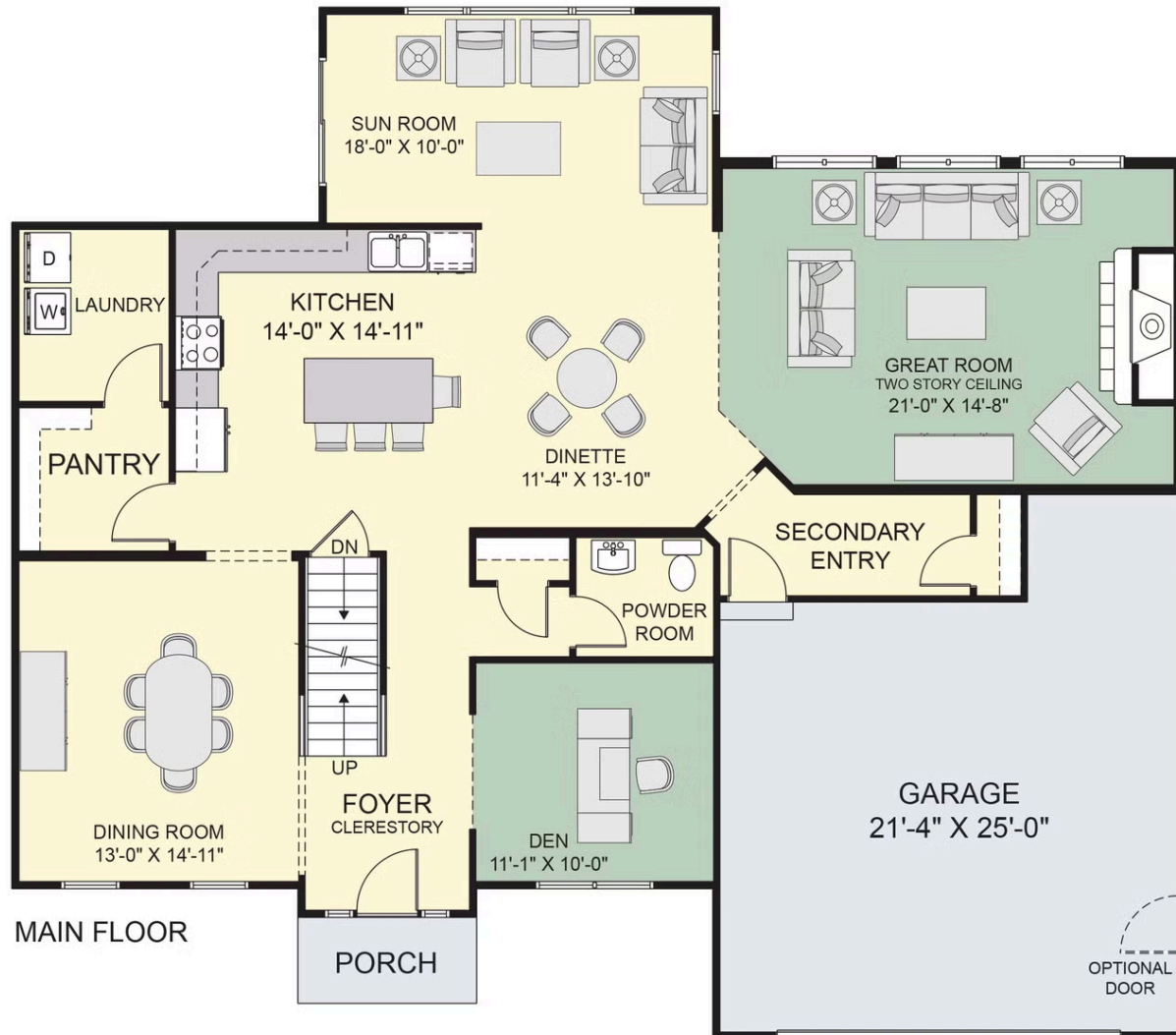
On the second level, the 4 bedrooms have been situated so that the entrances are spread apart to offer more privacy, an essential feature that can be overlooked in some floor plans. Your Primary Suite, which includes a dressing area, expansive Walk-In Closet, and a private bath retreat. The 3 additional bedrooms are also accompanied by a full bath.

This exclusive home design gives you so many choices for your life.

\* Photos may depict some features no longer available.

All square footage is approximate. Renderings are artist’s conceptions and may vary slightly from the actual home. Homes may be built in reverse of plans shown, depending on site conditions. Minor architectural changes may be made occasionally at the option of the builder. Please contact your Sales Consultant for details.

## First Floor



## Second Floor

